

Bamboo Charcoal Wood Veneer Panel Waterproof Fireproof 1220x2440mm

Basic Information

- Place of Origin: Shandong, China
- Brand Name: Shangbairong
- Model Number: Bamboo charcoal wood veneer
- Minimum Order Quantity: 2

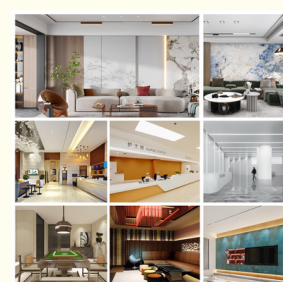


Product Specification

- Material: Bamboo Charcoal Fiber + PVC
- Size: 1220x2440mm
- Thickness: 5mm/8mm
- Width: 1220mm
- Pattern: Geometric
- Function: Moisture-Proof, Anti-static, Sound-Absorbing, Mould-Proof, Waterproof, Fireproof, Soundproof
- Feature: Waterproof, ECO-Friendly, Fireproof
- Color: Customized Color
- Usage: Indoor Wall Panel Decoration
- Installation: Easily Installation
- Length: Customer's Demand
- Style: Modern Attractive
- Raw Material: Bamboo Charcoal Fiber + PVC



More Images



Product Description

Bamboo Charcoal Wood Veneer Indoor Decorative Panel

Product Overview

Premium bamboo charcoal wood veneer panels for hotel, commercial, and residential interior wall decoration. Features modern geometric design with customizable colors and sizes.

Key Features

- Moisture-proof and waterproof construction
- Fireproof and sound-absorbing properties
- Anti-static and mould-proof surface
- ECO-friendly bamboo charcoal fiber + PVC material
- Easy installation with modern attractive style

Technical Specifications

Material	Bamboo Charcoal Fiber + PVC
Standard Size	1220x2440mm (Custom sizes available)
Thickness	5mm/8mm
Warranty	More than 5 years
Applications	Hotels, Commercial Spaces, Residential, Offices
MOQ	1 piece

Product Images



WOOD BOARD PRODUCTION FACTORY



10 YEARS OF INDUSTRY EXPERIENCE

100+employees
30+production lines



MONTHLY OUTPUT OF 150000 SQUARE METERS

Over 10000 square meters of factory building area
100000 square meters of standing inventory



1-ON-1 TAILORED SERVICE

7 senior designers with 5-10 years of experience
Over 100 million yuan has been invested in bidding in the past two years

Eight Characteristics

OCHO RAZONES PARA ELEGIRNOS

Factory sales ①



Sample custom ③



Large stock ⑤

② Export Qualification



④ Free Design





Offline Showroom ⑦



⑥ Support joining



⑧ Intra-city Service



Multiple Devices

PERFECT SUPPLY CHAIN SYSTEM

SUBSTRATE
PRODUCTION



Raw material



Cold water setting



Cutting

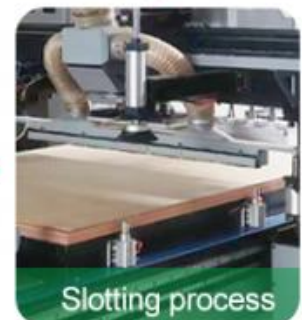


Checking

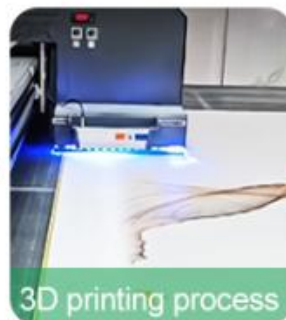
FINISHED
PRODUCT
PROCESSING



Covering film



Slotting process



3D printing process



Carving process

『ONE-STOP』 SOLID CORE BOARD

INNOVATIVELY INTRODUCING CO-EXTRUSION TECHNOLOGY
THE SURFACE AND CORE OF THE SUBSTRATE ARE PRODUCED
STRENGTHEN DIFFERENT PERFORMANCE SURFACES AND CORE
REQUIREMENTS ACCORDING TO DIFFERENT STANDARDS





Export standards



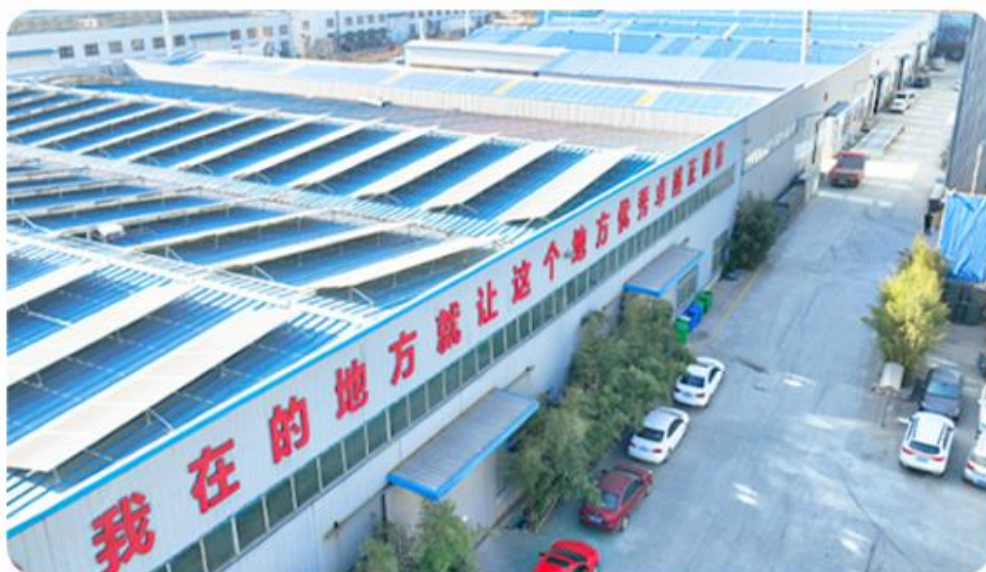
New materials



Safe formula

Strength Factory

『WINNING TOMORROW WITH QUALITY TRUST』



Shanghai Zhuokang Wood Industry Co., Ltd. a comprehensive production-oriented enterprise specializing in the production and sales of various new environmentally friendly decorative materials. With years of industry experience and advanced production technology, we are committed to providing customers with high-quality products and

Project Capabilities

We provide complete project solutions including customized sizes, colors, and packaging to meet specific design requirements for hotels and commercial spaces.

About Shanghai Zhuokang Wood Industry Co., Ltd.

Professional manufacturer of premium wall panels with strong R&D capabilities. Our products combine durability with eco-friendly materials, featuring waterproof, moisture-proof, and flame-retardant properties.









We serve global markets including Europe, North America, Middle East, and South America with customized OEM/ODM solutions. Our wall panels are widely used in living rooms, bedrooms, offices, hotels, and schools.



Shanghai Zhuokang Wood Industry Co., Ltd.

☎ 15165583667

✉ jifei@zhuokangsh.com

🌐 bamboocharcoalboard.com

Room 1501, Building 2, No. 2225 Huancheng West Road, Nanqiao, Fengxian District, Shanghai