

Class B1 SPC Wall Panel 600*2440*4mm Stone Plastic Composite Eco-Friendly Wood Grain Seamless Locking Waterproof Interior Decoration Board For Bathroom

Our Product Introduction

Basic Information

- Place of Origin: China
- Brand Name: Shangbairong
- Certification: SGS
- Model Number: SPC Wall Panel
- Minimum Order Quantity: 500m³
- Price: CNY49.9-59.9/m³
- Packaging Details: Package and shipping
- Delivery Time: 3-30days
- Payment Terms: T/T, D/P
- Supply Ability: 6000 meter per day



Product Specification

- Item: SPC
- Source: Linyi, Shandong
- Length: 2800mm Or Customized
- Thickness: 4mm-8mm
- Color: Various Colors Available
- Design Style: Modern
- Application: Bathroom
- Product Type: Others
- Function: Fireproof, Heat Insulation, Moisture
- Fire Resistance: Class B1
- Feature: Waterproof, Anti-slip, Wear Resistant
- Waterproof: Yes
- Installation: Easy To Install With Click System
- Raw Material: 100% Virgin
- Highlight: **Waterproof SPC Wall Panel,**

STRUCTURAL COMPOSITION

UV layer

Waterproof, anti slip, and corrosion-resistant

Wear resistant layer

Anti scratch and anti scratch enhanced lifespan

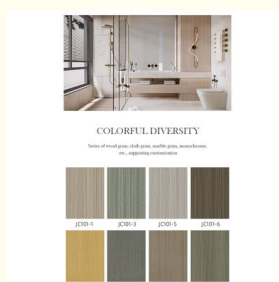
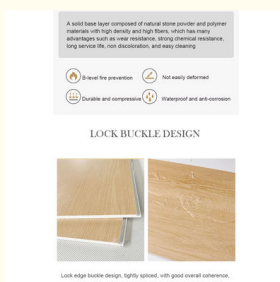
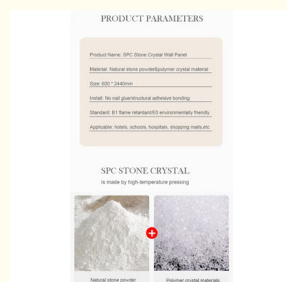
Color film

Real texture support customization

SPC material

Natural Stone Powder&Polymer Crystal Materials

More Images



Product Description

Product Description

Product Name	SPC Wall Panel
Project Solution Capability	total solution for projects
Function	Moisture-Proof, Mould-Proof, Waterproof, Fireproof
Design Style	Modern
Brand Name	shangbairong
Warranty	More than 5 years
Material	Wood-plastic Composite Environmental Material
Keywords	Bathroom panels
Usage	Indoor Wall Panel Decoration
Color	Customized Color
Size	Customized Sizes Support
Advantage	Eco-friendly / 100% Waterproof
Design	Mordern/Classic/3d

SPC WALL PANEL

Hotel renovation, no need to smash walls



NINE ADVANTAGES



Fireproof



Eco friendly



Save money
and time



Easy installation



Low construction
noise



Waterproof



Customization



No need to
smash walls



Anti scratch

STRUCTURAL COMPOSITION

UV layer

Waterproof, anti slip, and corrosion-resistant

Wear resistant layer

Anti scratch and anti scratch enhanced lifespan

Color film

Real texture support customization

SPC material

Natural Stone Powder&Polymer Crystal Materials



PRODUCT PARAMETERS

Product Name: SPC Stone Crystal Wall Panel

Material: Natural stone powder&polymer crystal material

Size: 600 * 2440mm

Install: No nail glue/structural adhesive bonding

Standard: B1 flame retardant/E0 environmentally friendly

Applicable: hotels, schools, hospitals, shopping malls,etc

SPC STONE CRYSTAL

Is made by high-temperature pressing



Natural stone powder



Polymer crystal materials

A solid base layer composed of natural stone powder and polymer materials with high density and high fibers, which has many advantages such as wear resistance, strong chemical resistance, long service life, non discoloration, and easy cleaning



B-level fire prevention



Not easily deformed



Durable and compressive



Waterproof and anti-corrosion

LOCK BUCKLE DESIGN



Lock edge buckle design, tightly spliced, with good overall coherence, waterproof and impermeable, better alternative to ceramic tiles



COLORFUL DIVERSITY

Series of wood grain, cloth grain, marble grain, monochrome,
etc., supporting customization



JC101-1



JC101-3



JC101-5



JC101-6



SP28801-74



SP28802-74



SP28703-73



SP27701-49



SP28202-49



SP17802-04



SP16302-49



FD2017-58



FD099-1



FD2016-58



FD30041-22



FD30041-22



FD2002-08



FD058-2012



JC303-14



JC303-13



FD2002-08



FD058-2012



JC303-14



JC303-13



JC303-2



JC312-1



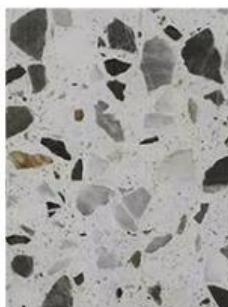
JC301-1



JC311



YS8052Y1



YS8039Y6



YS8019-4Y2



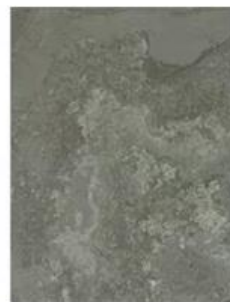
YS8019-3Y2



YS8009-2Y1



YS8012Y1



YS8007-3Y1



YS8011Y1



YS8022-1Y1



YS8002Y1



XR013-01



XR066-01



XR061-01



XR004-01



XR017-01



XR006-01



XR052-01



XR005-01



XR01401



XR001-09

ABOUT US

PARAMETER DISPLAY FASHIO DASUAN



HIGH-END CUSTOM WOOD VENEER

PRODUCTION BASE

Shanghai Zhuokang Wood Industry Co., LTD., main pvc wall panel, wood solid grille, ecological wood Great Wall panel, U-shaped ceiling, square, wood sound-absorbing wall panel and other products.



Shanghai zhuokang Wood Industry Co.,Ltd. is company specializing in the production processing of wood veneer,coating board, Keding board,wood veneer background wall,dado board,edge strip,wood veneer,coating board,Keding,wood veneer background wall,dado board, edge strip and other products,with a complete scientific quality management system.The integrity,strength and product quality of Shanghai zhuokang Wood Industry Co., Ltd. have been recognized by the industry.

FAQ

1. Who are we?

We are based in Shanghai, China, start from 2018,sell to North America(20.00%),Domestic Market(20.00%),Oceania(10.00%),Eastern Europe(10.00%),Mid East(10.00%),Southeast Asia(10.00%),South Asia(5.00%),South America(5.00%),Northern Europe(5.00%),Africa (5.00%). There are total about 101-200 people in our office.

2. How can we guarantee quality?

Always a pre-production sample before mass production;
Always final inspection before shipment;

3.what can you buy from us?

Interior Wall Panel/Bamboo Crystal Wall Panel/Bamboo Charcoal Wall Board/WPC Wall Panel/PVC Wall PanelSolid Wood Grille/
Decor Wall Panel/PU Stone Wall Panel

4. why should you buy from us not from other suppliers?

Shanghai Zhuokang Wood Industry Co.,Ltd. has 26 international advanced production lines dozens of skilled production R&D.
Our products are waterproof and moisture-proof, fire-retardant and flame-retardant.

5. what services can we provide?

Accepted Delivery Terms: FOB,CFR,CIF,EXW,FAS,CIP,FCA,CPT,DEQ,DDP,DDU,Express Delivery ;
Accepted Payment Currency:USD,EUR,JPY,CAD,AUD,HKD,GBP,CNY,CHF;
Accepted Payment Type: T/T,L/C,D/P D/A,MoneyGram,Credit Card,PayPal,Western Union,Cash,Escrow;



Shanghai Zhuokang Wood Industry Co., Ltd.



15202188098



ella@zhuokangsh.com



bamboocharcoalboard.com

Room 1501, Building 2, No. 2225 Huancheng West Road, Nanqiao, Fengxian District, Shanghai