

Customizable Length SPC Wall Board Interior Decorative Panels Easy Installation

Our Product Introduction

for more products please visit us on bamboocharcoalboard.com

Basic Information

- Place of Origin: China
- Brand Name: Shangbairong
- Certification: ROHS
- Model Number: SPC Wall Panel
- Minimum Order Quantity: 500m³
- Price: CNY19.9-25.9/m³
- Packaging Details: Package shipping
- Delivery Time: 3-10work days
- Payment Terms: L/C, D/A, D/P, T/T
- Supply Ability: 6000 meter per day

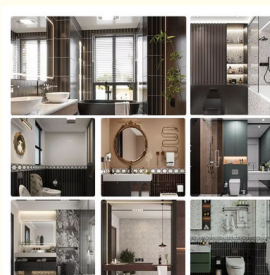
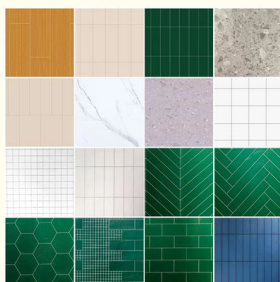


Product Specification

- Use: Indoor
- Length: 2440mm Or Customized
- Feature: Waterproof , Anti-slip , Wear Resistant
- Anti-Slip: Yes
- Function: Fireproof, Heat Insulation, Moisture
- Fire Resistance: Class B1
- Anti-Bacterial: Yes
- Durability: High
- Edge: Bevel Edge
- Eco-Friendly: Yes
- Design Style: Modern
- Highlight: Customizable Length SPC Wall Board, Waterproof SPC Wall Board



More Images

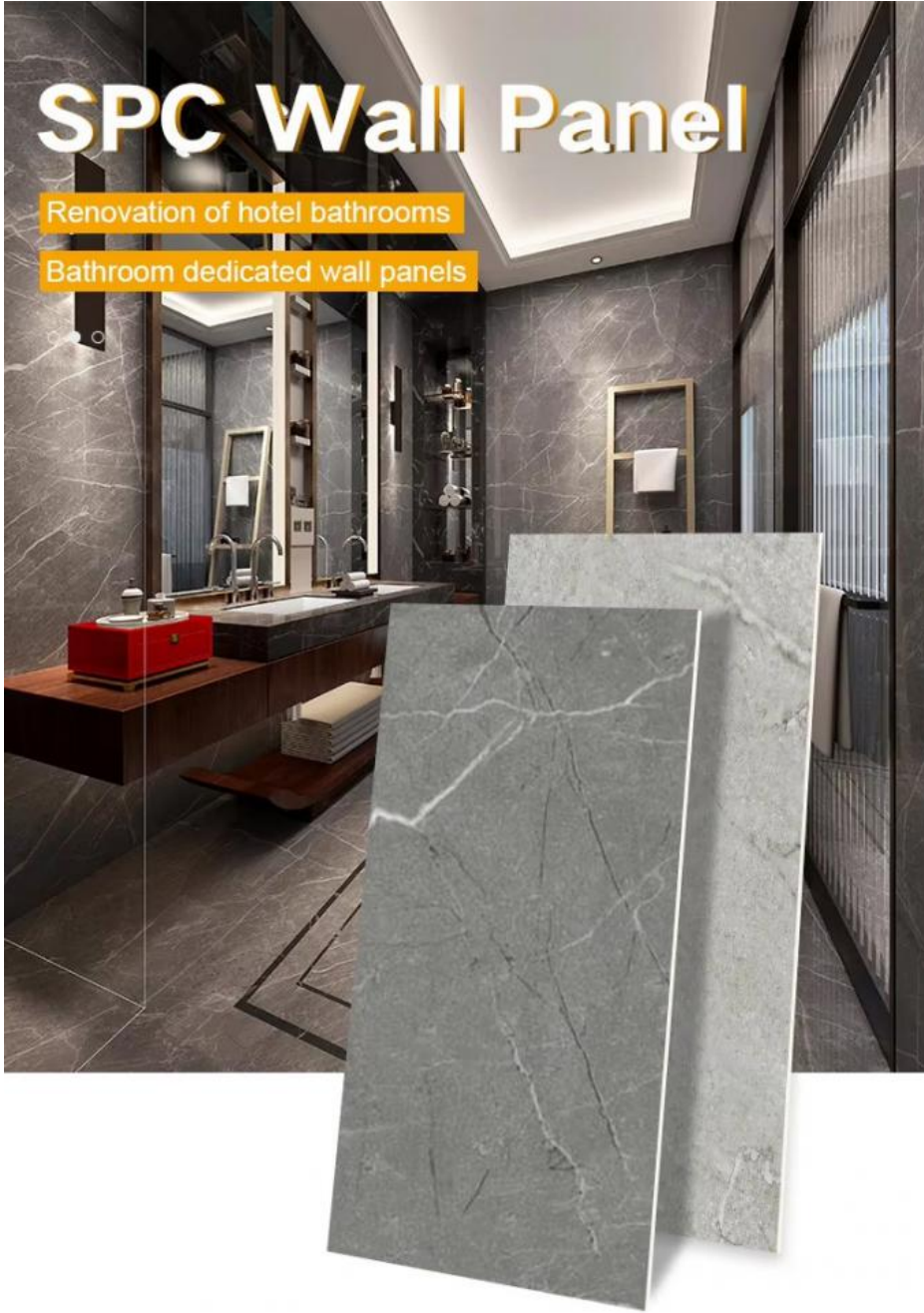


[1101Products of ZK\(1\).pdf](#)

SPC Wall Panel

Renovation of hotel bathrooms

Bathroom dedicated wall panels



Our Product Introduction

for more products please visit us on bamboocharcoalboard.com

NINE ADVANTAGES



Fireproof



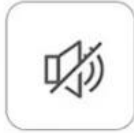
Eco friendly



Save money
and time



Easy installation



Low construction
noise



Waterproof



Customization



No need to
smash walls



Anti scratch

STRUCTURAL COMPOSITION

UV layer

Waterproof, anti slip, and corrosion-resistant

Wear resistant layer

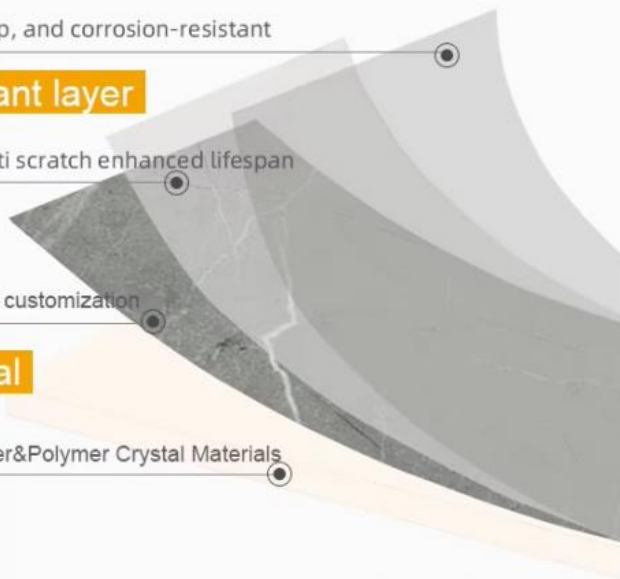
Anti scratch and anti scratch enhanced lifespan

Color film

Real texture support customization

SPC material

Natural Stone Powder&Polymer Crystal Materials



PRODUCT PARAMETERS

Product Name: SPC Stone Crystal Wall Panel

Material: Natural stone powder&polymer crystal material

Size: 600 * 2440mm

Install: No nail glue/structural adhesive bonding

Standard: B1 flame retardant/E0 environmentally friendly

Applicable: hotels, schools, hospitals, shopping malls,etc

SPC STONE CRYSTAL

Is made by high-temperature pressing



Natural stone powder



Polymer crystal materials

A solid base layer composed of natural stone powder and polymer materials with high density and high fibers, which has many advantages such as wear resistance, strong chemical resistance, long service life, non discoloration, and easy cleaning



B-level fire prevention



Not easily deformed



Durable and compressive



Waterproof and anti-corrosion

LOCK BUCKLE DESIGN



Lock edge buckle design, tightly spliced, with good overall coherence, waterproof and impermeable, better alternative to ceramic tiles



COLORFUL DIVERSITY

Series of wood grain, cloth grain, marble grain, monochrome,
etc., supporting customization



JC101-1



JC101-3



JC101-5



JC101-6



SP28801-74



SP28802-74



SP28703-73



SP27701-49



SP28202-49



SP17802-04



SP16302-49



FD2017-58



FD099-1



FD2016-58



FD30041-22



FD30041-22



FD2002-08



FD058-2012



JC303-14



JC303-13



FD2002-08



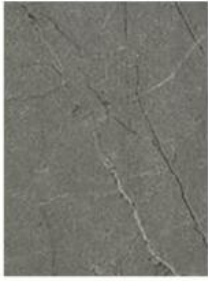
FD058-2012



JC303-14



JC303-13



JC303-2



JC312-1



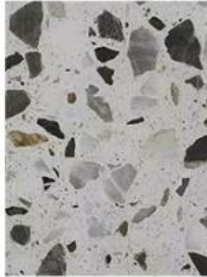
JC301-1



JC311



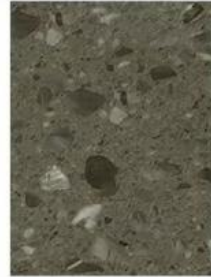
YS8052Y1



YS8039Y6



YS8019-4Y2



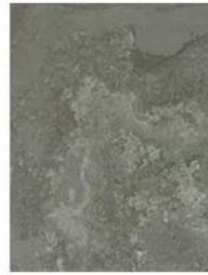
YS8019-3Y2



YS8009-2Y1



YS8012Y1



YS8007-3Y1



YS8011Y1



YS8022-1Y1



YS8002Y1



XR013-01



XR066-01



XR061-01

XR004-01

XR017-01

XR006-01



XR052-01

XR005-01


XR01401

XR001-09



Shanghai Zhuokang Wood Industry Co., Ltd.

 15202188098

 ella@zhuokangsh.com

 bamboocharcoalboard.com

Room 1501, Building 2, No. 2225 Huancheng West Road, Nanqiao, Fengxian District, Shanghai