

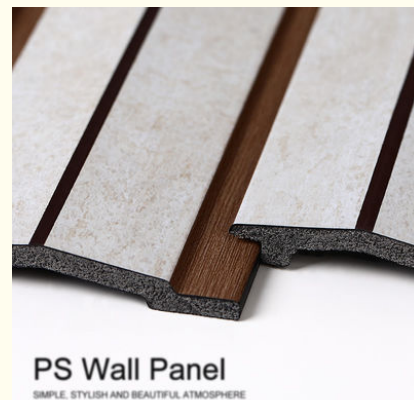
## Custom Factory PS Wall Panels For Interior Decoration Of Houses WPC PS Ceiling Panels

Our Product Introduction

for more products please visit us on [bamboocharcoalboard.com](http://bamboocharcoalboard.com)

### Basic Information

- Place of Origin: China
- Brand Name: Shangbairong
- Certification: ROHS
- Model Number: PS Wall Panel
- Minimum Order Quantity: 500
- Price: 19.9
- Packaging Details: Package and shipping
- Delivery Time: 3-7days
- Payment Terms: T/T, D/P



### Product Specification

- Package: Pallet+carton Packaging
- Anti-Corrosion: Yes
- Sample: Free
- Product Material: Wood Plastic Composite
- Application: Indoor/Outdoor Wall Decoration
- Function: Waterproof, Moisture-Proof, Fireproof
- Installation: Easy To Install
- Highlight: Custom WPC Wall Panels, Houses WPC Wall Panels, Interior Decoration WPC Wall Panels

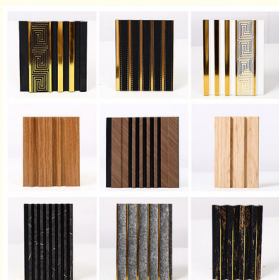
### Product Parameters

Simple, stylish and beautiful atmosphere

Product Name: PS Wall Panel	Origin: Shandong
Minimum order quantity: 500 pieces	Material: PS polystyrene
Surface: concave-convex	Style: Modern and minimalist
Sound insulation index: 100 (dB)	Thermal conductivity: strong (W/m.K)
Product usage: Home, hospital, kindergarten, commercial exhibition halls, kitchens, bathrooms, etc.	

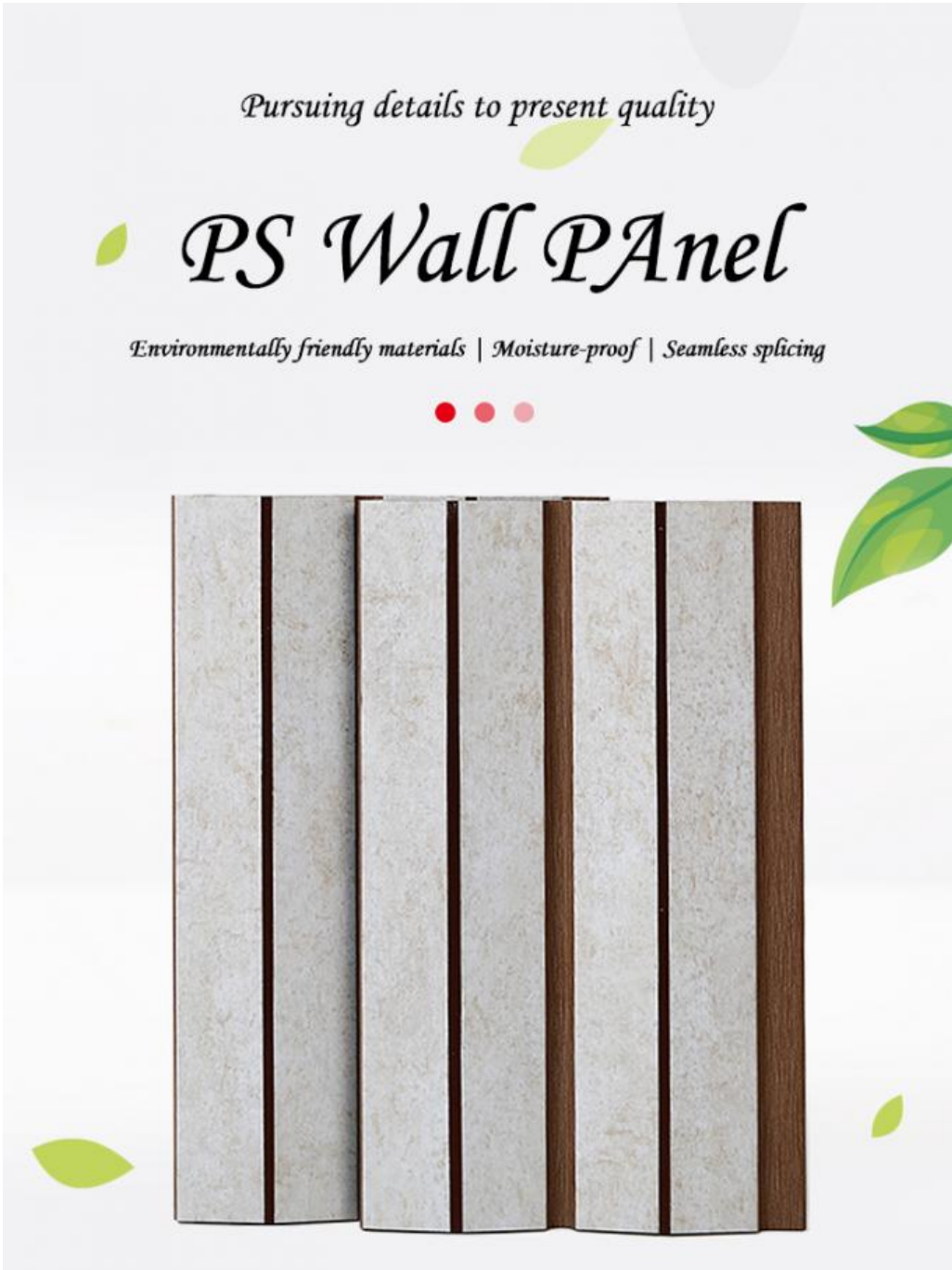


### More Images



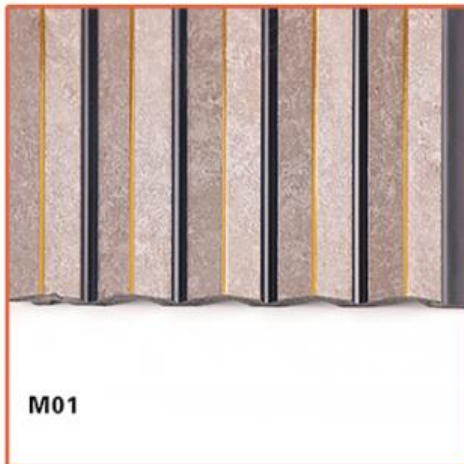
Product Description

and	PS Wall Panels
Size	Support customization
Safety	Class B fire protection
Advantage	Waterproof, moisture-proof, moth-proof, fire-resistant and wear-resistant
Design Style	modern simplicity
Brand Name	PS Wall Panels
Product name	ZHUOKANG PS wall panels
Material	Wood Plastic Composite
Feature	ECO-Friendly+fireproof+waterproof
Size	Customized Sizes Support
Length	Customer's Demand
Style	Modern Attractive
Installation	Easily Installation

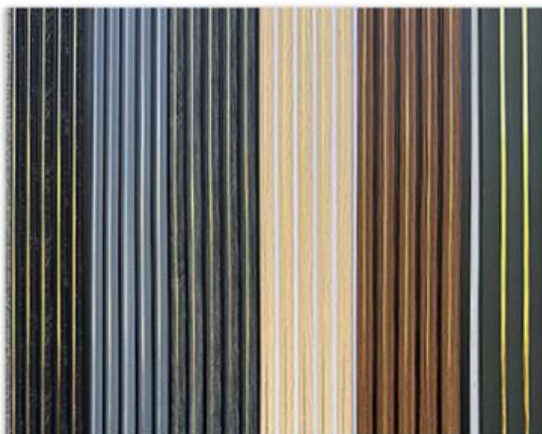


# Multiple styles

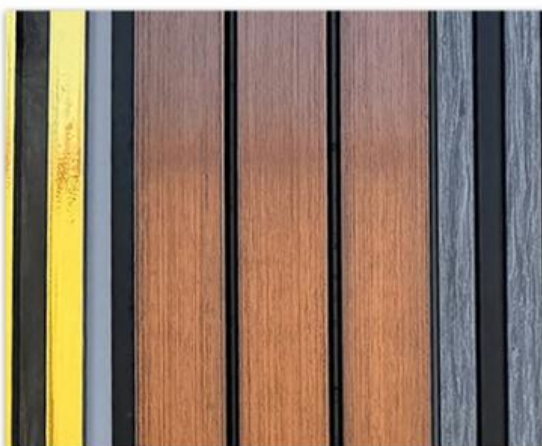
Shanghai Zhuokang Wood Industry Co., Ltd. We have been focusing on production for nearly ten years, with factory direct sales, quality assurance, multiple colors, and support for customization





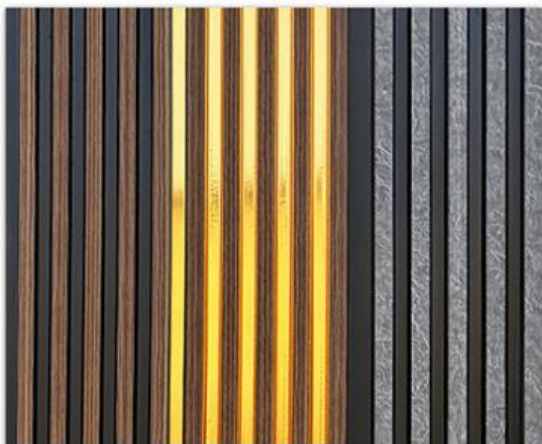


**LS-M01**

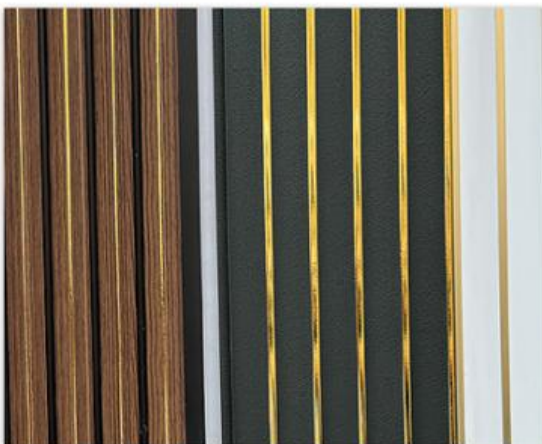


**LS-M02**





**LS-M03**



**LS-M04**

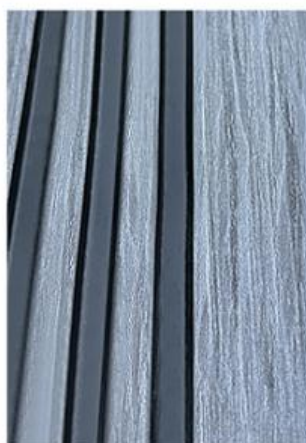




**LS-M08**



**LS-M09**





# Installation effect

PS wall panels have the characteristics of being lightweight, sturdy, corrosion-resistant, and easy to process, and are widely used in advertising production, furniture, building decoration, etc Packaging and other fields







# ABOUT US

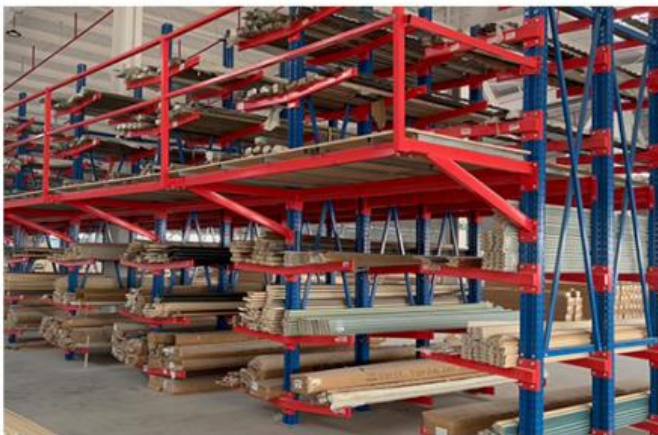
PARAMETER DISPLAY FASHIO DASUAN



## HIGH-END CUSTOM WOOD VENEER

# PRODUCTION BASE

Shanghai Zhuokang Wood Industry Co., LTD.,main pvc wall panel, wood solid grille, ecological wood Great Wall panel, U-shaped ceiling, square, wood sound-absorbing wall panel and other products.



# Company Profile

---

---

---

**Shanghai zhuokang Wood Industry Co.,Ltd.** is company specializing in the production processing of wood veneer,coating board, Keding board,wood veneer background wall,dado board,edge strip,wood veneer,coating board,Keding,wood veneer background wall,dado board, edge strip and other products,with a complete scientific quality management system.The integrity,strength and product quality of Shanghai zhuokang Wood Industry Co., Ltd. have been recognized by the industry.

## FAQ

### 1. Who are we?

We are based in Shanghai, China, start from 2018,sell to North America(20.00%),Domestic Market(20.00%),Oceania(10.00%),Eastern Europe(10.00%),Mid East(10.00%),Southeast Asia(10.00%),South Asia(5.00%),South America(5.00%),Northern Europe(5.00%),Africa (5.00%). There are total about 101-200 people in our office.

### 2. How can we guarantee quality?

**Always a pre-production sample before mass production;**

**Always final inspection before shipment;**

### 3.what can you buy from us?

Interior Wall Panel/Bamboo Crystal Wall Panel/Bamboo Charcoal Wall Board/WPC Wall Panel/PVC Wall Panel/Solid Wood Grille/  
Decor Wall Panel/PU Stone Wall Panel

### 4. why should you buy from us not from other suppliers?

Shanghai Zhuokang Wood Industry Co.,Ltd. has 26 international advanced production lines dozens of skilled production R&D.  
Our products are waterproof and moisture-proof, fire-retardant and flame-retardant.

### 5. what services can we provide?

**Accepted Delivery Terms:** FOB,CFR,CIF,EXW,FAS,CIP,FCA,CPT,DEQ,DDP,DDU,Express Delivery ;

**Accepted Payment Currency:**USD,EUR,JPY,CAD,AUD,HKD,GBP,CNY,CHF;

**Accepted Payment Type:** T/T,L/C,D/P D/A,MoneyGram,Credit Card,PayPal,Western Union,Cash,Escrow;



**Shanghai Zhuokang Wood Industry Co., Ltd.**



15202188098



ella@zhuokangsh.com



bamboocharcoalboard.com

Room 1501, Building 2, No. 2225 Huancheng West Road, Nanqiao, Fengxian District, Shanghai