

## Bamboo Charcoal Wood Veneer Interior Decorative Panels Waterproof Flame Retardant

Our Product Introduction

more products please visit us on [bamboocharcoalboard.com](http://bamboocharcoalboard.com)

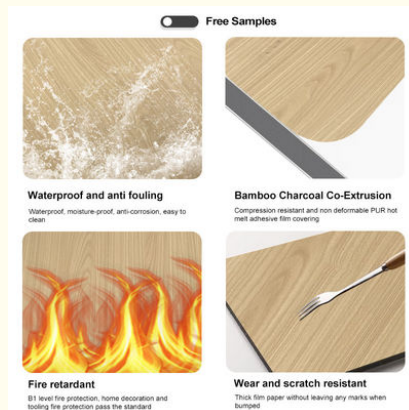
### Basic Information

- Place of Origin: China
- Brand Name: ZhuoKang
- Certification: ROHS
- Model Number: Bamboo Charcoal Wood Veneer
- Minimum Order Quantity: 10
- Price: 9.9
- Packaging Details: Package and shipping
- Delivery Time: 3-7
- Payment Terms: D/T;T/T
- Supply Ability: Factory direct sales



### Product Specification

- Fire Rating: Level B
- Glue: PUR Glue
- Application: Home Furnishing, House Decoration, Hotel
- Color: Customer Require Or Color Card
- Style: Modern Luxury
- Usage: Office Building ,Living Room, Dining Room, Bedroom, School, Supermarket.etc
- Water Resistance: Yes
- Feature: Waterproof,eco-friendly
- Highlight: **Flame Retardant Bamboo Charcoal Wood Veneer**  
**, Waterproof Bamboo Charcoal Wood Veneer ,**  
**Interior Decorative Bamboo Charcoal Wood Veneer**



### More Images

#### Two substrate options

Style:1.22m \* 2.44m/2.6m/2.8m/3m/3.6m

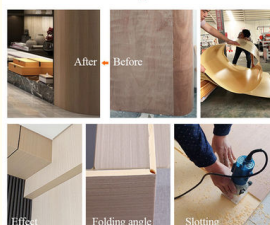
Bamboo charcoal fiber, also known as carbon crystal fiber, is made by carbonization of bamboo and wood fiber through special processes resulting in antibacterial, moth resistant, effects.



Double sided bamboo charcoal fiber Double sided bamboo and wood fiber

Two materials, one quality

#### Bending Angle



## Product Description

### Product Description:

At 5/8mm thickness and 1.22m width, this wood charcoal bamboo marble panel is easy to install can be cut to fit any space. The water-resistant design makes it perfect for use in high-moisture areas such as bathrooms and kitchens.

The Bamboo Charcoal Wood Veneer is a versatile choice that can be used to add warmth texture to any room. The natural wood grain and charcoal bamboo color create a unique and striking look that is both modern and timeless.

Whether you're looking to create a statement wall or add a touch of luxury to your home or office, bamboo is a great choice. Its durability and resistance to water and fire make it a practical choice, while its stylish design ensures that it will be a standout feature in any space.

### Applications:

The product is made using bamboo charcoal wood veneer, which is a unique material that has moisture-proof and waterproof properties. This makes it ideal for use in areas that are prone to moisture and water damage, such as bathrooms, kitchens, basements. The marble panel is available in various lengths, including 2.44, 2.6, 2.8, 3, 3.2, 3.4, and 3.6 meters, and can also be customized to meet specific requirements.

The product uses PUR glue, which provides a strong and durable bond, ensuring that the wooden decorative panel remains intact even in high humidity conditions. The packing of the product is done using pallet carton packaging, which ensures that the product is delivered in good condition.

The bamboo charcoal wood veneer is a suitable for use in a variety of settings, such as office buildings, living rooms, dining rooms, bedrooms, schools, and supermarkets. It is a versatile product that can be used for both residential and commercial purposes.

With factory direct sales a supply ability that meets customer demand, ZhuoKang Bamboo Charcoal Wood Veneer is a product that offers both quality affordability. The delivery time for the product is 3-7 days, payment terms include D/T and T/T.

In summary, the ZhuoKang Bamboo Charcoal Wood Veneer is a moisture-proof waterproof wooden decorative panel for use in variety of settings. Bamboo charcoal wood veneer uses PUR glue for a strong durable bond. The product is available in various lengths and can be customized to meet specific requirements. It is suitable for use in residential and commercial settings, with factory direct sales and a supply ability that meets customer demand, it is a product that offers both quality and affordability.

### FAQ:

**Q: What is the name of this product?**

A: The name is Bamboo Charcoal Wood Veneer.

**Q: Where is this product made?**

A: This product is made in China.

**Q: Is this product certified?**

A: Yes, this product is certified with ROHS.

**Q: What is the minimum order quantity for this product?**

A: The minimum order quantity for this product is 10.

**Q: How long is the delivery time for this product?**

A: The delivery time for this product is between 3-7 days.

**Q: What are the payment terms for this product?**

A: The payment terms for this product are D/T and T/T.

**Q: What is the supply ability of this product?**

A: The supply ability of this product is factory direct sales.

### Product Catalog:

[1101Products of ZK\(1\).pdf](#)

# 『WALL BOARD』

## BAMBOO CHARCOAL WOOD VENEER

INNOVATIVELY INTRODUCING CO-EXTRUSION TECHNOLOGY,  
THE SURFACE AND CORE OF THE SUBSTRATE ARE PRODUCED  
STRENGTHEN DIFFERENT PERFORMANCE SURFACES AND CORE  
REQUIREMENTS ACCORDING TO DIFFERENT STANDARDS.



## Eight Characteristics

OCHO RAZONES PARA ELEGIRNOS

Factory sales ①



Sample custom ③



Large stock ⑤



Offline Showroom ⑦



② Export Qualification



④ Free Design



⑥ Support joining



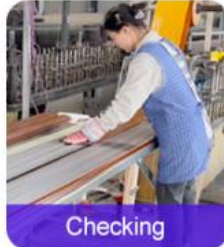
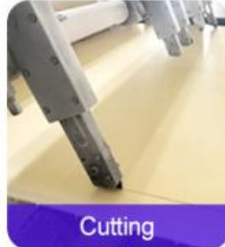
⑧ Intra-city Service



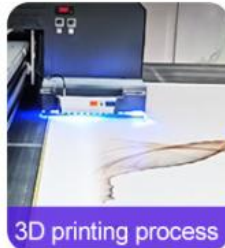
## Multiple Devices

PERFECT SUPPLY CHAIN SYSTEM

## SUBSTRATE PRODUCTION



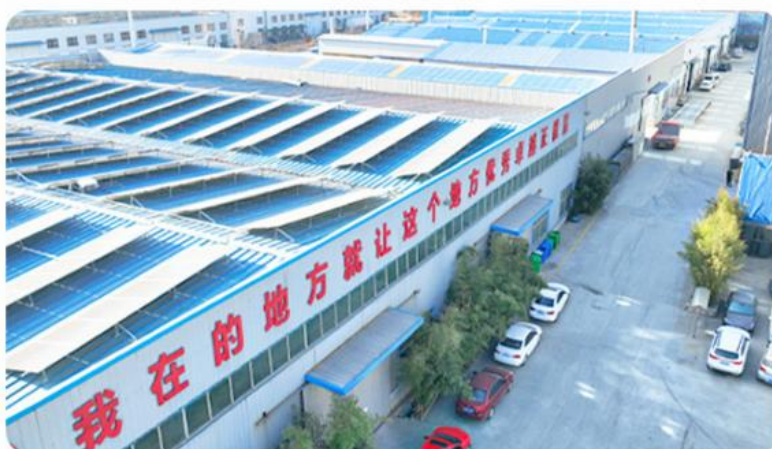
## FINISHED PRODUCT PROCESSING





# Strength Factory

『WINNING TOMORROW WITH QUALITY TRUST』



Shanghai Zhuokang Wood Industry Co., Ltd. a comprehensive production-oriented enterprise specializing in the production and sales of various new environmentally friendly decorative materials. With years of industry experience and advanced production technology, we are committed to providing customers with high-quality products and excellent services.

The factory mainly produces carbon crystal panels, bamboo and wood fiber wall panels, decorative lines, internet famous grilles, artistic backgrounds, etc. We can create molds, design and manufacture according to customer requirements. In China, we have rich experience in undertaking large and small engineering orders. Overseas, our products are exported to multiple countries around the world.



Offline Showroom  
**3000M**



Factory Area  
**10000M**



Monthly Output  
**1000000M**



Production Line  
**30**



Design Team  
**10 People**



R&D Team  
**20 People**



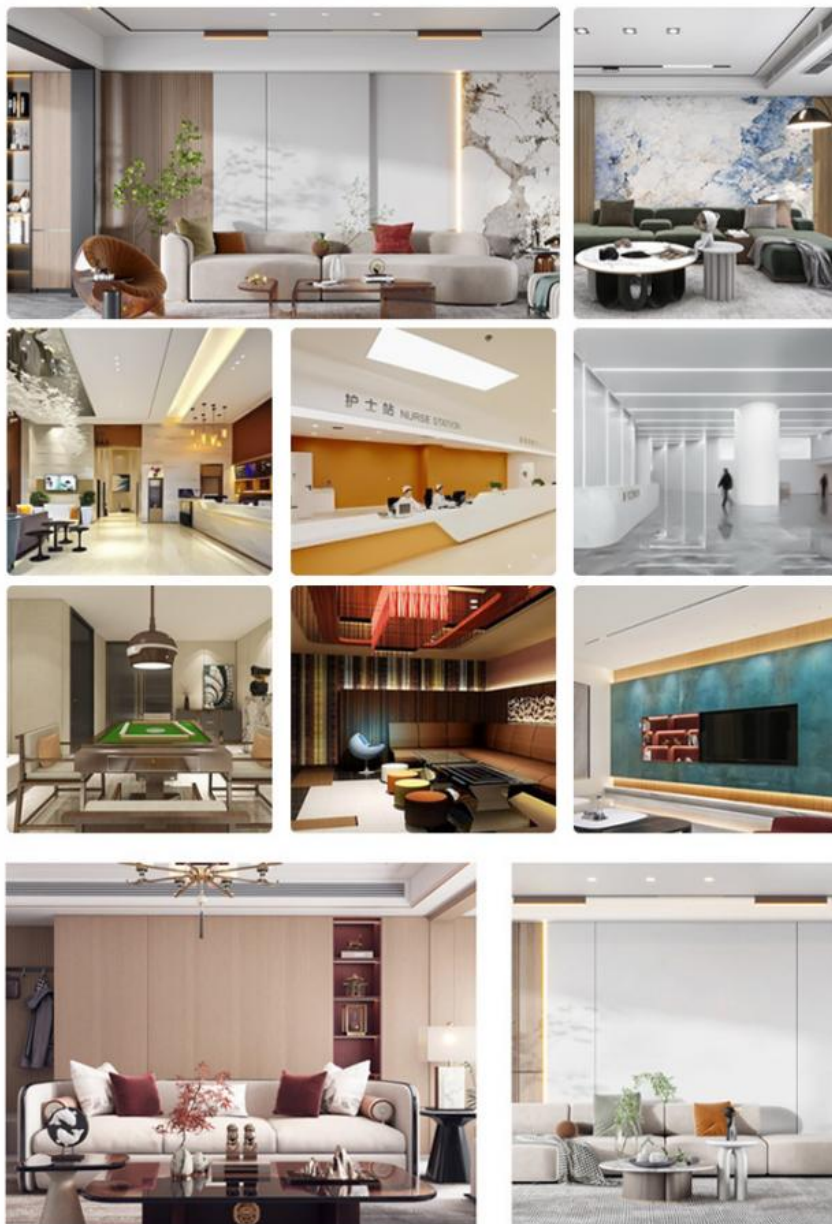
Guide Installation  
**10 People**



Production team  
**100 People**

# Application Effects

PRODUCT MIX APPLICATION EFFECT





**Shanghai Zhuokang Wood Industry Co., Ltd.**



15202188098



ella@zhuokangsh.com



bamboocharcoalboard.com

Room 1501, Building 2, No. 2225 Huancheng West Road, Nanqiao, Fengxian District, Shanghai