

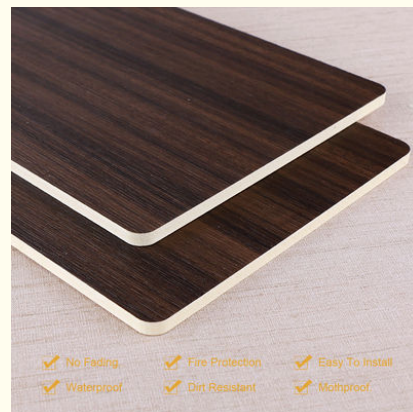
Customized Moisture Resistant Wood Grain Bamboo Fiber Wall Paneling

Our Product Introduction

for more products please visit us on bamboocharcoalboard.com

Basic Information

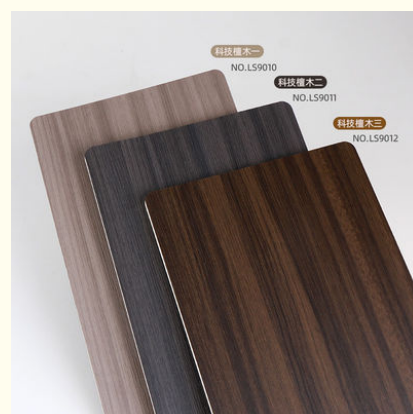
- Place of Origin: China
- Brand Name: ZhuoKang
- Certification: ISO9001
- Model Number: 1220*2440*5mm/8mm
- Minimum Order Quantity: Negotiate
- Price: Negotiate
- Packaging Details: Pallet +Carton Packaging
- Delivery Time: 5-8 work days
- Payment Terms: L/C, T/T
- Supply Ability: 6000 meter per day



- ✓ No Fading
- ✓ Fire Protection
- ✓ Easy To Install
- ✓ Waterproof
- ✓ Dirt Resistant
- ✓ Mouldproof

Product Specification

- Material: Bamboo Charcoal ,Bamboo Wood Fiber, Bamboo Charcoal Fiber
- Function: Moisture-Proof,Waterproof,
- Color: Various And Customized
- Style: Modern,Modern & Elegant Design
- Application: Interiors Homes,Interior & Exterior Wall Decoration,school,office
- Thickness: 5/8mm
- Packing: Packed By Carton And Pallet
- Design: Simple Design,Mordern
- Highlight: **Moisture Resistant Bamboo Fiber Wall Panel, Moisture Resistant Bamboo Fiber Wall Paneling , Moisture Resistant Wood Grain Wall Paneling**



More Images



Product Description

Hot Sale Waterproof And Moisture Resistant Wood Grain Bamboo Fiber Wall Paneling

Waterproof and moisture-proof wood grain bamboo fiber wall panel is a new type of environmentally friendly product, the wall panel is designed with waterproof and fire protection, making it a versatile and durable solution for indoor and outdoor applications. The production of bamboo fiber wall panels has a significantly lower carbon footprint, helping to mitigate climate change. Bamboo siding is biodegradable and recyclable, making it an environmentally friendly alternative to non-biodegradable materials like plastic siding. At the end of its useful life, the panels can be composted or recycled, reducing waste and minimizing environmental impact. The wall panels are engineered to be waterproof, offering excellent resistance to moisture and moisture. This feature makes it ideal for kitchens, bathrooms, and other areas that come into contact with water. Unlike traditional wood, bamboo fibers will not swell or deform when in contact with water, ensuring the structural integrity and longevity of the wall panels.

Specification

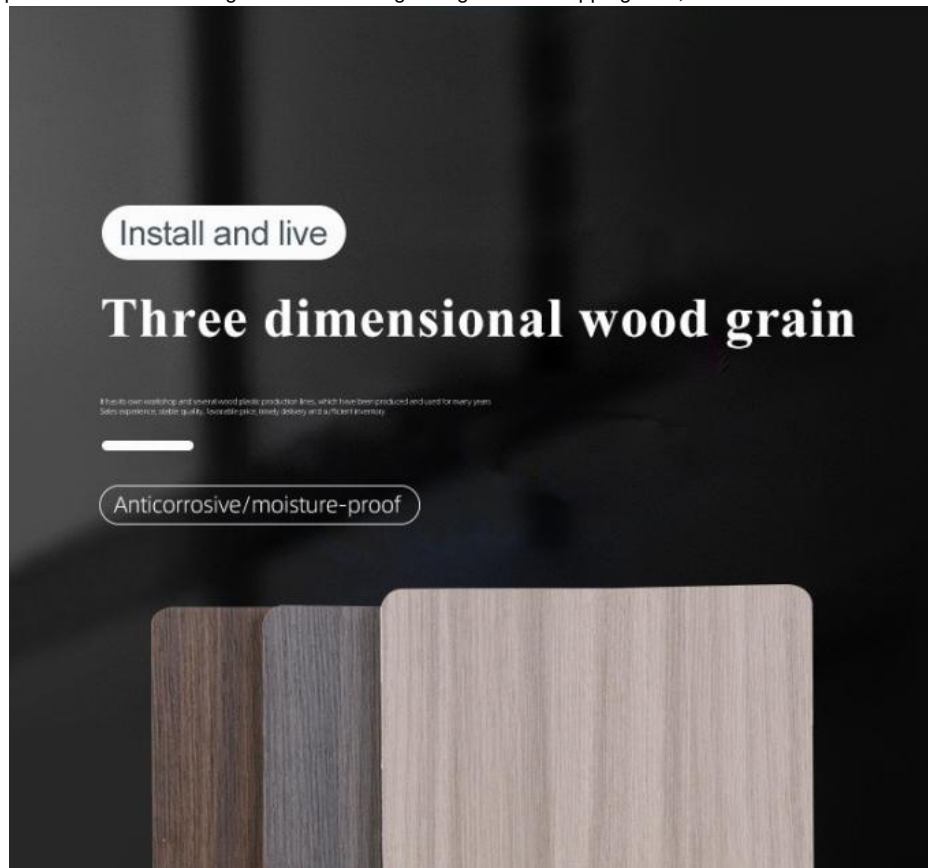
Item	Value
Material	Bamboo Charcoal Wall Wanel
Size	1220*2440/2600/2800/3000*5/8mm
Length	Customer's Demand
After-sale Service	Online technical support

Advantages

Easy Installation,Environmental Protection,Flexible,Bendable,High Density, foldable.Fireproof +waterproof+Moisture-proof+anti-scratch+Sound-Absorbing, Mould-Proof.Lightweight.Clear textures,Variety of colours,etc.

Applications

Hotel/Villa/Apartment/Office Building/Bathroom/Dining/Living Room/Shopping Mall,etc





PRODUCT INFORMATION

Support custom real manufacturer

SPECIFICATIONS: 2440*1220*5/8MM (Length customizable)!

NOTE: There will be some color difference due to light, display and other reasons. Please consult customer service before placing an order!



THICK:5MM



THICK:8MM





PRODUCT DETAILS DISPLAY

Support custom real manufacturer



Quality Assurance

DIRECT DEAL



Green Environmental
Protection

CLEAR TEXTURE



Easy And fast
Installation

FAST DELIVERY



Support Customization

FREE SAMPLE





01

moisture-proof

Wear resistance, no deformation and long service life

02

Flame retardant

Flame retardant Not easy to fade, durable and wear-resistant



03

Easy to take care of

It is dirt resistant and easy to take care of. Just wipe it with a rag

PRODUCT INSTALLATION

Support custom real manufacturer

SOFA SETTING WALL

LEISURELY

[illegible]



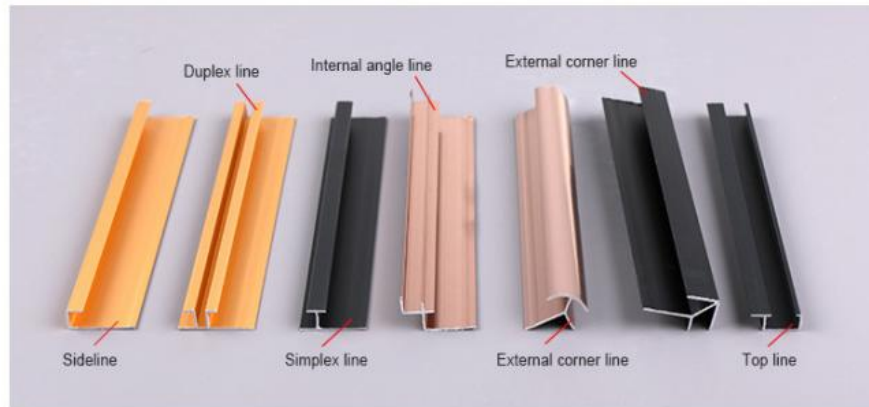
RESTAURANT



PORCH



COLLOCATION LINE



• Duplex line

• Simplex line

• Sideline

• External corner line



• EASY INSTALLATION OF BENDING ANGLE

COLOR DISPLAY

More than 100 color choices



QUALIFICATION CERTIFICATE



ABOUT US





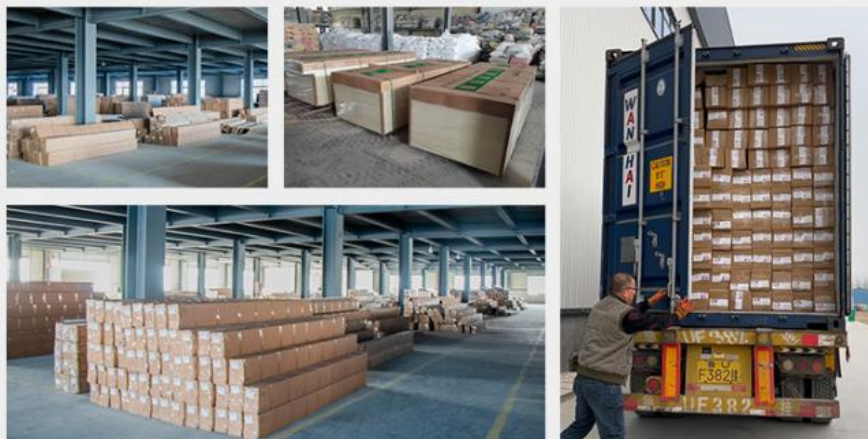
Large stock spot, timely delivery. Multiple production lines work at the same time, the supply capacity is stronger.



PRODUCTION BASE



ecological wood Great Wall board, relief board, U-shaped ceiling, square, wood sound-absorbing board and other products.



Shanghai Zhuokang Wood Industry Co., Ltd. is a professional production and processing of bamboo fiber wood veneer, carbon crystal board, bamboo fiber wallboard, bamboo fiber grille, outdoor wood plastic floor, wall skirt board, bamboo fiber lines, aluminum alloy metal lines and other products, the company has a complete and scientific quality management system. Shanghai Zhuokang Wood Industry Co., Ltd. integrity, strength and product quality has been recognized by the industry. Welcome friends from all walks of life to visit, guidance and business negotiations.

Q:How does your factory do regarding quality control?

A:"Quality is priority". Our factory has gained ISO9001 ,ISO45001, ISO 14001

Q:Can we make an OEM order?

A: We can offer or supply goods as customers' requirements.

Q: Do you offer free samples ?

A: Free sample is available, but delivery cost paid by customer.

Q: What is your delivery time ?

A: Generally, 1-2 weeks after confirmation of your deposit payment. Specific time depends on order items and order quantity.

Q: How about the delivery time ?

A: Lead time since receipt of 30% T/T deposit payment : 15-30 days. (Samples will be prepared within 5 days.

Q: What kind of of payments does support ?

A: T/T, L/C, D/P, e-Credit Line

Q: Where are your main markets?

A: Dear friend, our markets covered Middle East, South America, South Asia, Southeast Asia, East Europe and Africa.



Shanghai Zhuokang Wood Industry Co., Ltd.



15202188098



ella@zhuokangsh.com



bamboocharcoalboard.com

Room 1501, Building 2, No. 2225 Huancheng West Road, Nanqiao, Fengxian District, Shanghai