

Odorless Bamboo Fiber Wall Panel Wood Grain Veneer Sheets 1220*2440mm

Our Product Introduction

for more products please visit us on bamboocharcoalboard.com

Basic Information

- Place of Origin: China
- Brand Name: ZhuoKang
- Certification: ISO9001
- Model Number: 1220*2440*5mm/8mm
- Minimum Order Quantity: Negotiate
- Price: Negotiate
- Packaging Details: Pallet +Carton Packaging
- Delivery Time: 5-8 work days
- Payment Terms: L/C, T/T
- Supply Ability: 6000 meter per day

Size:1220*2440*5mm / 8mm



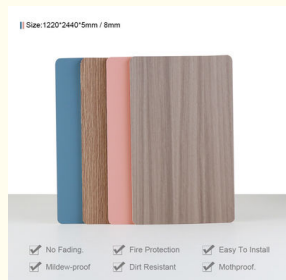
- ✓ No Fading.
- ✓ Fire Protection
- ✓ Easy To Install
- ✓ Waterproof
- ✓ Dirt Resistant
- ✓ Mouldproof.

Product Specification

- Material: Bamboo Charcoal ,Bamboo Wood Fiber, Bamboo Charcoal Fiber
- Function: Moisture-Proof,Waterproof,
- Color: Various And Customized
- Style: Modern,Modern & Elegant Design
- Application: Interiors Homes,Interior & Exterior Wall Decoration,school,office
- Thickness: 5/8mm
- Packing: Packed By Carton And Pallet
- Design: Simple Design,Mordern
- Highlight: **Bamboo Fiber Wall Panel 1220*2440mm, Bamboo Fiber wood grain veneer sheets, wood grain veneer sheets 1220*2440mm**



More Images



Product Description

Factory Direct Sale Environmentally Friendly Odorless Wood Grain Bamboo Fiber Wall Panels

Wood grain bamboo fiber wallboard is a new type of environmentally friendly product made of bamboo fiber extracted from bamboo plants. Striking the perfect balance between beauty and function, this sustainable material replicates the natural beauty of wood grain while delivering impressive performance properties. The wall panels are designed to be water and fire resistant, making them a versatile and durable solution for both indoor and outdoor applications. The carbon footprint of the production of bamboo fiber wall panels is significantly reduced. Bamboo plants absorb large amounts of carbon dioxide as they grow, making them effective carbon sinks that help mitigate climate change. Bamboo siding is biodegradable and recyclable, making it an environmentally friendly alternative to non-biodegradable materials like plastic siding. At the end of its useful life, the panels can be composted or recycled, reducing waste and minimizing environmental impact.

Specification

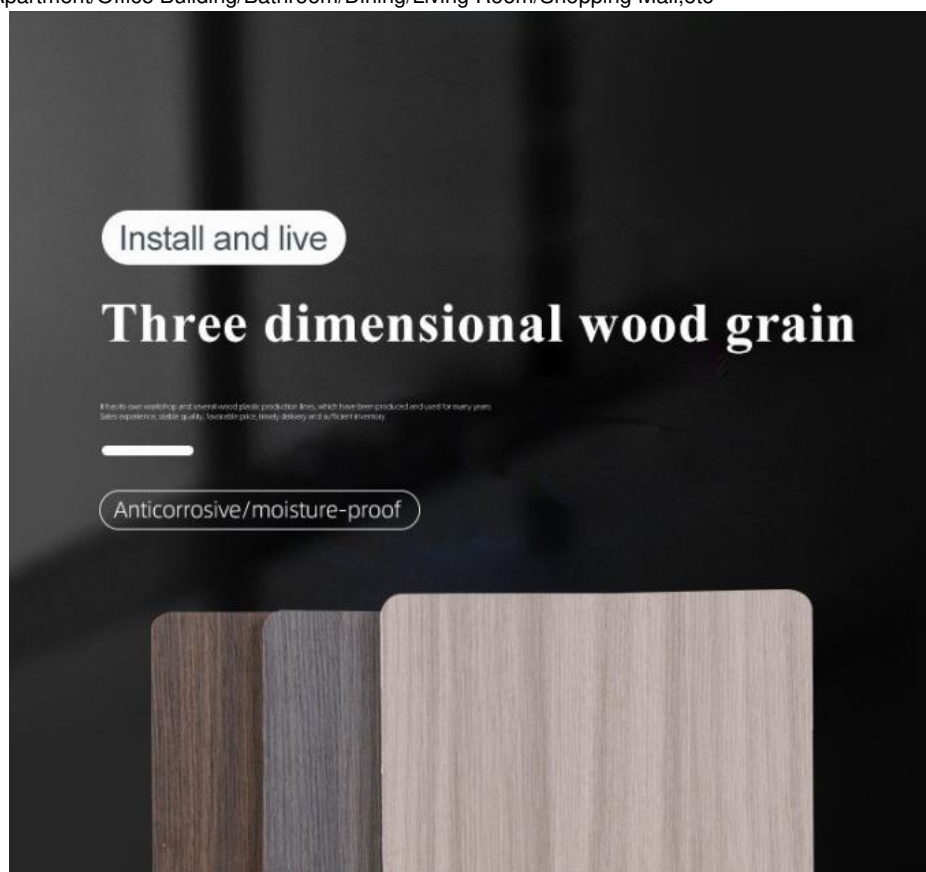
Item	Value
Material	Bamboo Charcoal Wall Wanel
Size	1220*2440/2600/2800/3000*5/8mm
Length	Customer's Demand
After-sale Service	Online technical support

Advantages

Easy Installation,Environmental Protection,Flexible,Bendable,High Density, foldable.Fireproof +waterproof+Moisture-proof+anti-scratch+Sound-Absorbing, Mould-Proof.Lightweight.Clear textures,Variety of colours,etc.

Applications

Hotel/Villa/Apartment/Office Building/Bathroom/Dining/Living Room/Shopping Mall,etc





PRODUCT INFORMATION

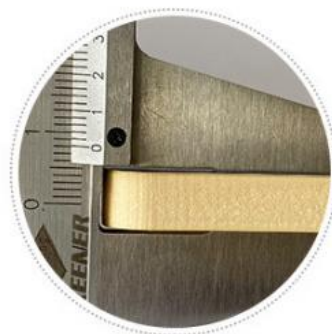
Support custom real manufacturer

■ SPECIFICATIONS: 2440*1220*5/8MM (Length customizable)!

NOTE: There will be some color difference due to light, display and other reasons. Please consult customer service before placing an order!



THICK:5MM



THICK:8MM





PRODUCT DETAILS DISPLAY

Support custom real manufacturer



Quality Assurance

DIRECT DEAL



Green Environmental
Protection

CLEAR TEXTURE



Easy And fast
Installation

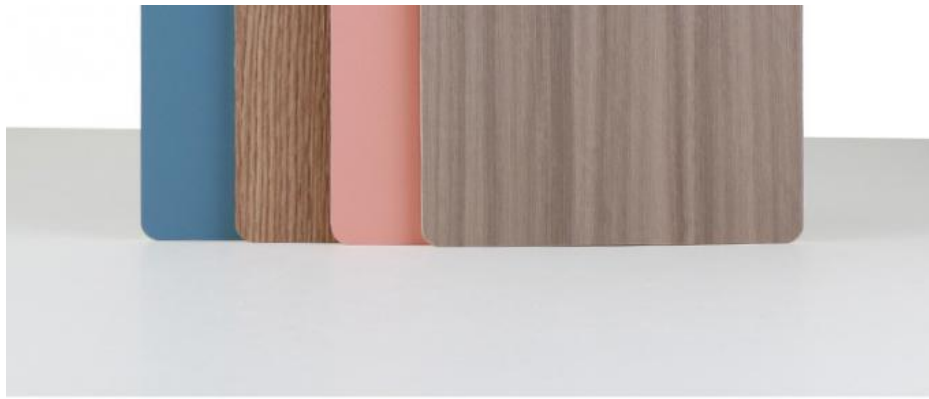
FAST DELIVERY



Support Customization

FREE SAMPLE





01

moisture-proof

Wear resistance, no deformation and long service life

02

Flame retardant

Flame retardant Not easy to fade, durable and wear-resistant



03

Easy to take care of

It is dirt resistant and easy to take care of. Just wipe it with a rag

PRODUCT INSTALLATION

Support custom real manufacturer

SOFA SETTING WALL

LEISURELY

LEISURELY





CONFERENCE ROOM



RESTAURANT



PORCH



BEDROOM

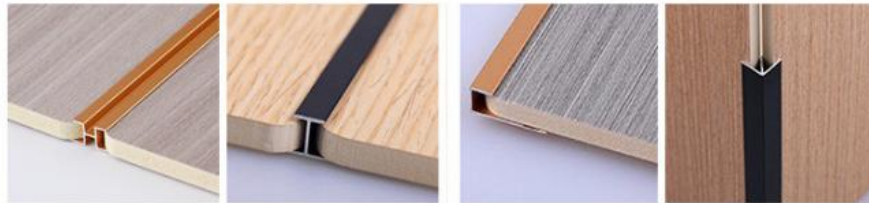
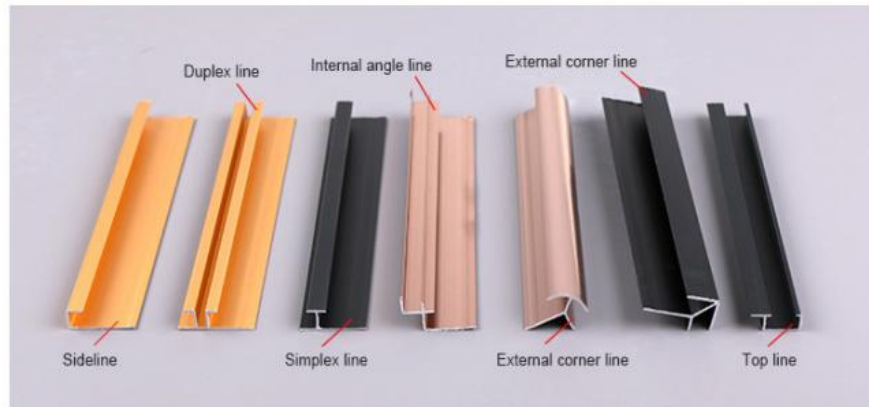


LIVING ROOM



LIVING ROOM

COLLOCATION LINE



• Duplex line

• Simplex line

• Sideline

• External corner line



• EASY INSTALLATION OF BENDING ANGLE

COLOR DISPLAY

More than 100 color choices



QUALIFICATION CERTIFICATE



ABOUT US





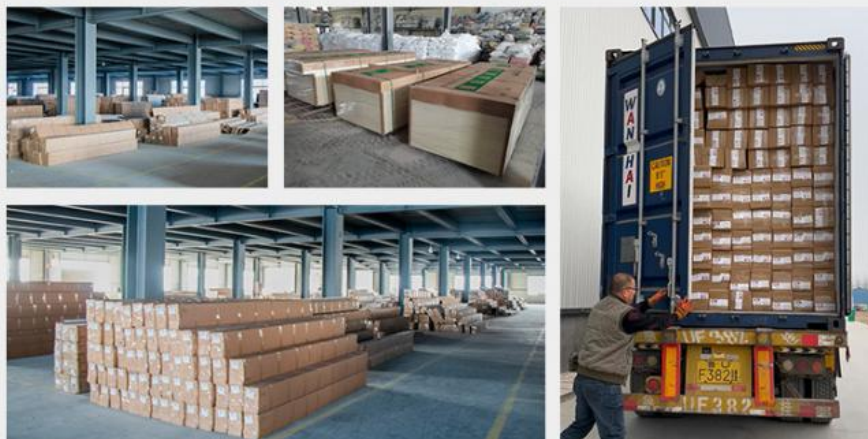
Large stock spot, timely delivery. Multiple production lines work at the same time, the supply capacity is stronger.



PRODUCTION BASE



ecological wood Great Wall board, relief board, U-shaped ceiling, square, wood sound-absorbing board and other products.



Shanghai Zhuokang Wood Industry Co., Ltd. is a professional production and processing of bamboo fiber wood veneer, carbon crystal board, bamboo fiber wallboard, bamboo fiber grille, outdoor wood plastic floor, wall skirt board, bamboo fiber lines, aluminum alloy metal lines and other products, the company has a complete and scientific quality management system. Shanghai Zhuokang Wood Industry Co., Ltd. integrity, strength and product quality has been recognized by the industry. Welcome friends from all walks of life to visit, guidance and business negotiations.

Q:How does your factory do regarding quality control?

A:"Quality is priority". Our factory has gained ISO9001 ,ISO45001, ISO 14001

Q:Can we make an OEM order?

A: We can offer or supply goods as customers' requirements.

Q: Do you offer free samples ?

A: Free sample is available, but delivery cost paid by customer.

Q: What is your delivery time ?

A: Generally, 1-2 weeks after confirmation of your deposit payment. Specific time depends on order items and order quantity.

Q: How about the delivery time ?

A: Lead time since receipt of 30% T/T deposit payment : 15-30 days. (Samples will be prepared within 5 days.

Q: What kind of of payments does support ?

A: T/T, L/C, D/P, e-Credit Line

Q: Where are your main markets?

A: Dear friend, our markets covered Middle East, South America, South Asia, Southeast Asia, East Europe and Africa.



Shanghai Zhuokang Wood Industry Co., Ltd.



15202188098



ella@zhuokangsh.com



bamboocharcoalboard.com

Room 1501, Building 2, No. 2225 Huancheng West Road, Nanqiao, Fengxian District, Shanghai