

## Luxury Decorative Eco-Friendly Waterproof Fabric Bamboo Fiber Wall Paneling

Our Product Introduction

for more products please visit us on [bamboocharcoalboard.com](http://bamboocharcoalboard.com)

### Basic Information

- Place of Origin: China
- Brand Name: ZhuoKang
- Certification: ISO9001
- Model Number: 1220\*2440\*5mm/8mm
- Minimum Order Quantity: Negotiate
- Price: Negotiate
- Packaging Details: Pallet+Carton Packaging
- Delivery Time: 5-8 work days
- Payment Terms: L/C, T/T
- Supply Ability: 6000 meter per day



### Product Specification

- Material: Bamboo Charcoal ,Bamboo Wood Fiber
- Product Name: PVC Wall Panel, Decorative Wall Panel
- Feature: Eco-friendly, Waterproof+ECO-Friendly, Moisture-Proof
- Usage: Administration, Commerce, Entertainment, Home Wall Panel Decoration
- Color: Customized
- Packing: Packed By Carton And Pallet
- Function: Moisture-Proof, Waterproof, Soundproof, Anti-static
- Application: Interiors Homes, Interior & Exterior Wall Decoration, school, office, Wall Decoration
- Highlight: **Administration Bamboo Fiber Wall Panel, Bamboo Fiber Fabric Wall Paneling, Administration Fabric Wall Paneling**



### More Images



## Product Description

### Luxury Decorative Eco-friendly Waterproof Fabric Bamboo Fiber Wall Paneling

Eco-friendly Waterproof Fabric Bamboo Fiber Wall Panels bring a luxurious and sophisticated touch to your walls with its delicate bamboo fiber texture. The fabric-like exterior enhances the visual appeal of interior spaces, adding a touch of elegance and sophistication. Made with environmental responsibility in mind, the wall panels are made from environmentally friendly materials, ensuring a low environmental impact and contributing to a healthier living environment. Designed for practicality, the wall panels resist water and moisture, making them ideal for areas prone to moisture, such as bathrooms and kitchens. Wall panels stand the test of time and are durable enough to maintain their attractive appearance after years of use. Bamboo fiber wall panels are designed for easy installation, allowing for a smooth and efficient process during interior renovations or upgrades. The versatility of the application of wall panels complements a variety of interior design styles in both residential and commercial settings.

#### Specification

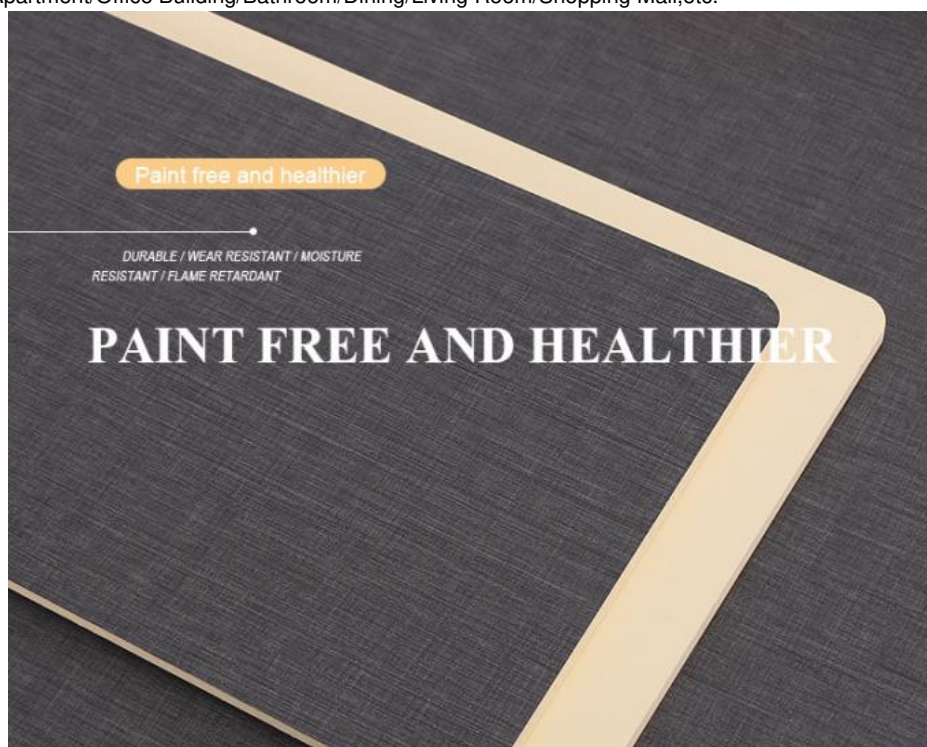
Item	Value
Material	Bamboo Charcoal Wall Panel
Size	1220*2440/2600/2800/3000*5/8mm
Length	Customer's Demand
After-sale Service	Online technical support

#### Advantages

Easy Installation,Environmental Protection,Flexible,Bendable,High Density, foldable.Fireproof +waterproof+Moisture-proof+anti-scratch+Sound-Absorbing, Mould-Proof.Lightweight.Clear textures,Variety of colours,etc.

#### Applications

Hotel/Villa/Apartment/Office Building/Bathroom/Dining/Living Room/Shopping Mall,etc.



# SOLID PLATE / MORE DURABLE

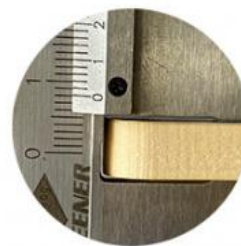
## Product Information

■ SPECIFICATIONS: 2440\*1220\*5/8MM (LENGTH CUSTOMIZABLE)!

NOTE: THERE WILL BE SOME COLOR DIFFERENCE DUE TO LIGHT, DISPLAY AND OTHER REASONS. PLEASE  
CONSULT CUSTOMER SERVICE BEFORE PLACING AN ORDER!



THICKNESS: 5MM



THICKNESS: 8MM





GREENWOOD

## WHY CHOOSE US

EO grade environmental protection standard material



Green  
health



Moisture  
-proof



Upgrade  
process



Flame  
retardant

HEALTH · SAFETY

## PRODUCT DETAILS DISPLAY



## HOME DECORATION<sup>o</sup> TEMPERAMENT

HE WILL BE PROMOTED

///

QUALITY ASSURANCE





02

## BIOPHILIA

breath and light

sustainability

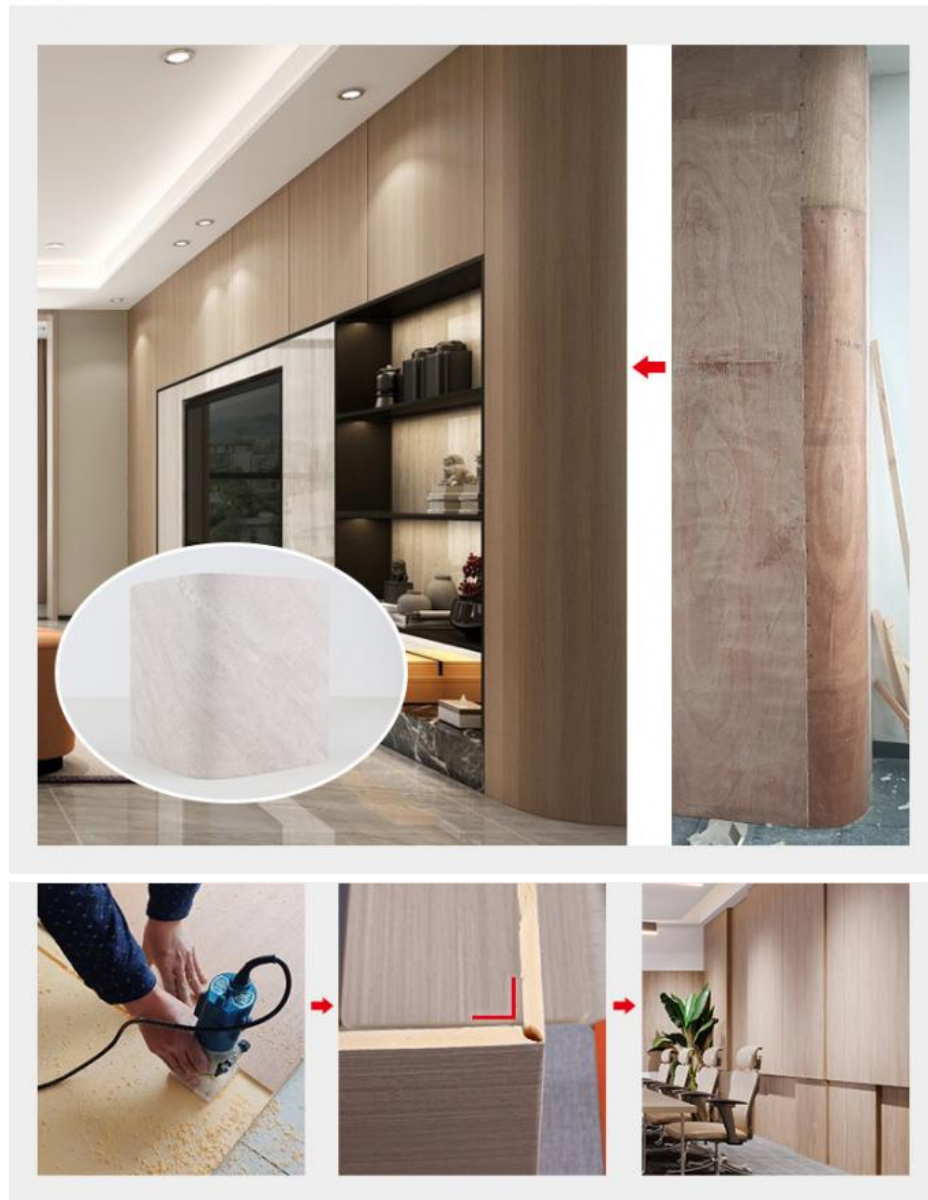
# Biophilia

呼吸与光  
亲生命性设计



- ✓ No Fading.
- ✓ Fire Protection
- ✓ Easy To Install
- ✓ Mildew-proof
- ✓ Dirt Resistant
- ✓ Mothproof.

# Easy installation



HEALTHY

## Solid Panel

- Hotel.office.Bedroom, etc   ■ Size:1220\*2440\*8/5MM
- Environmentally friendly materials are suitable for many occasions



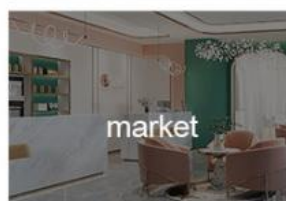
a living room



Porch



Restaurant



market

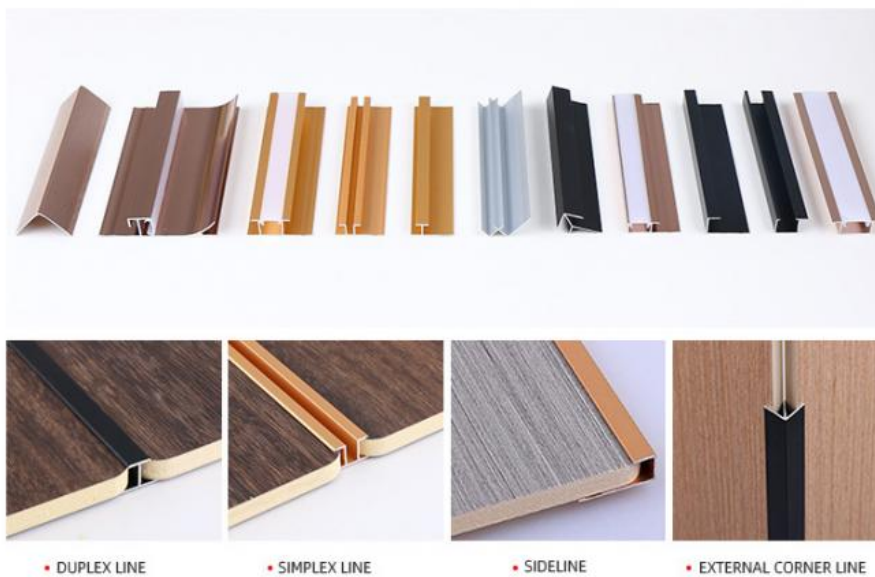


office



hotel

## | Line matching installation. |



## | Decoration Effect |





### | Qualification Certification |



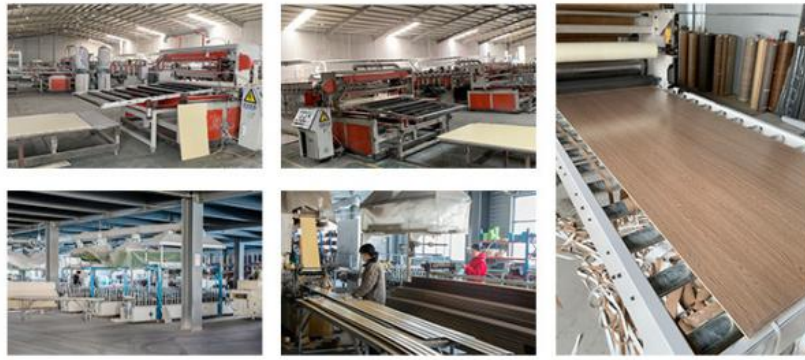
### | COLOR DISPLAY |





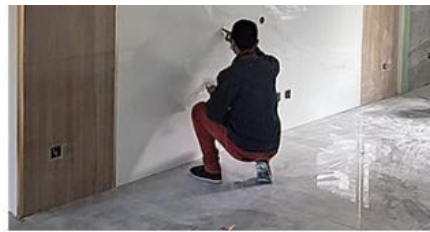
## About us



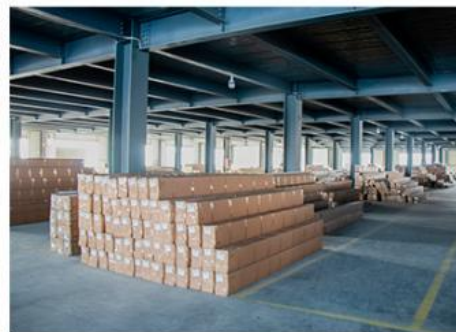


| Customer feedback |





## | Logistics Description |



Shanghai Zhuokang Wood Industry Co., Ltd. is a professional enterprise integrating research and development, production and sales. Through long-term research and experiments, we have successfully improved the parameters of the product, making our products more durable, waterproof, moisture-proof, flame retardant and environmental protection. Looking forward to the future, we will redouble our efforts to hone our internal skills, and return our customers and society with more mature technology, high-quality environmental protection products and excellent intimate service. If you need, please feel free to contact us!

Q: How does your factory do regarding quality control?

A: "Quality is priority". Our factory has gained ISO9001, ISO45001, ISO 14001

Q: Can we make an OEM order?

A: We can offer or supply goods as customers' requirements.

Q: Do you offer free samples?

A: Free sample is available, but delivery cost paid by customer.

Q: What is your delivery time ?

A: Generally, 1-2 weeks after confirmation of your deposit payment. Specific time depends on order items and order quantity.

Q: How about the delivery time ?

A: Lead time since receipt of 30% T/T deposit payment : 15-30 days. (Samples will be prepared within 5 days.)

Q: What kind of payments does support ?

A: T/T, L/C, D/P, e-Credit Line

Q: Where are your main markets?

A: Dear friend, our markets coverd Middle East, South America, South Asia, Southeast Asia, East Europe and Africa.



**Shanghai Zhuokang Wood Industry Co., Ltd.**



15202188098



ella@zhuokangsh.com



bamboocharcoalboard.com

Room 1501, Building 2, No. 2225 Huancheng West Road, Nanqiao, Fengxian District, Shanghai