

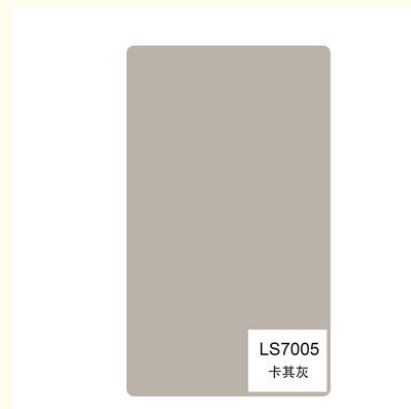
Administration Interior Decoration Skin Feel PVC Wall Panels Width 1.22m

Our Product Introduction

for more products please visit us on bamboocharcoalboard.com

Basic Information

- Place of Origin: China
- Brand Name: ZhuoKang
- Certification: ISO9001
- Model Number: 1220*2440*5mm/8mm
- Minimum Order Quantity: Negotiate
- Price: Negotiate
- Packaging Details: Pallet+Carton Packing
- Delivery Time: 5-8 work days
- Payment Terms: L/C, T/T
- Supply Ability: 6000 meter per day

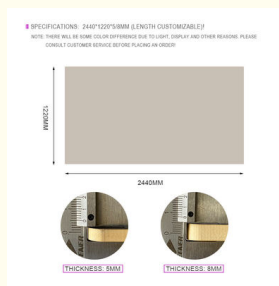
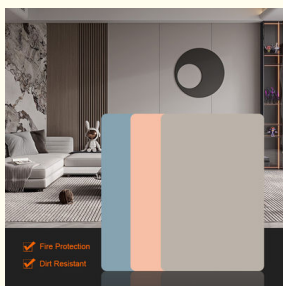


Product Specification

- Material: Bamboo Charcoal, bamboo Wood, PVC
- Color: Customized
- Certification: ISO9001
- Thickness: 5/8mm
- Length: 2.44/2.6/2.8/3/3.2/3.4/3.6 M Or Customized
- Width: 1.22m
- Usage: Administration, Commerce, Entertainment, Home Wall Panel Decoration
- Function: Moisture-Proof, Waterproof,
- Highlight: Skin Feel PVC Wall Panels Width 1.22m, Skin Feel PVC Wall Panel Width 1.22m, Skin Feeling PVC Wall Panel Width 1.22m



More Images



Product Description

Administration Interior Decoration Skin Feel PVC Wall Panels Width 1.22m

Interior Decoration Modern Luxurious Fire Skin Feel PVC Wall Panels The perfect solution for transforming an interior into a modern luxury haven. Elevate the ambiance while enjoying the benefits of fire protection, eco-consciousness and a pleasing tactile experience. PVC wall panels have a delicate skin-like texture that brings a luxurious and sophisticated feel to walls. The tactile experience adds depth and elegance to interior spaces. Wall panels bring elegance, comfort and a contemporary feel to interiors. Wall panels are fire rated, providing excellent protection from potential fire hazards and keeping the home or business environment safe. PVC wall panels are made from eco-friendly materials that ensure they are odorless and free from harmful substances. Enjoy a fresh and healthy living space. PVC wall panels are designed for long-lasting beauty and can withstand everyday wear and tear. Their durability ensures that they will retain their elegance and charm for years to come.

Specification

Item	Value
Material	Bamboo Charcoal Wall Panel
Size	1220*2440/2600/2800/3000*5/8mm
Length	Customer's Demand
After-sale Service	Online technical support

Advantages

Easy Installation,Environmental Protection,Flexible,Bendable,High Density, foldable.Fireproof +waterproof+Moisture-proof+anti-scratch+Sound-Absorbing, Mould-Proof.Lightweight.Clear textures,Variety of colours,etc.

Applications

Hotel/Villa/Apartment/Office Building/Bathroom/Dining/Living Room/Shopping Mall,etc.





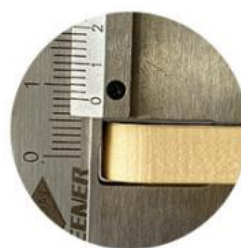
Product Information

■ SPECIFICATIONS: 2440*1220*5/8MM (LENGTH CUSTOMIZABLE)!

NOTE: THERE WILL BE SOME COLOR DIFFERENCE DUE TO LIGHT, DISPLAY AND OTHER REASONS. PLEASE CONSULT CUSTOMER SERVICE BEFORE PLACING AN ORDER!

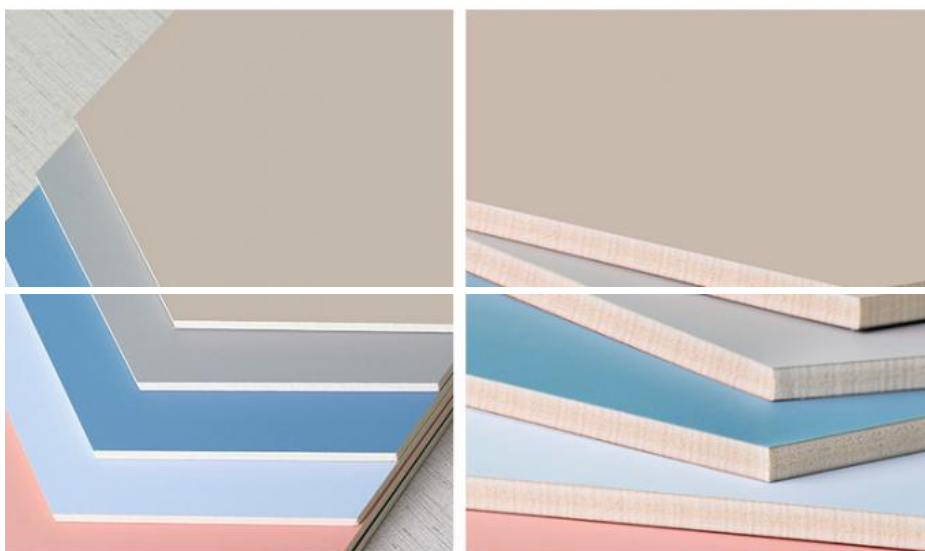
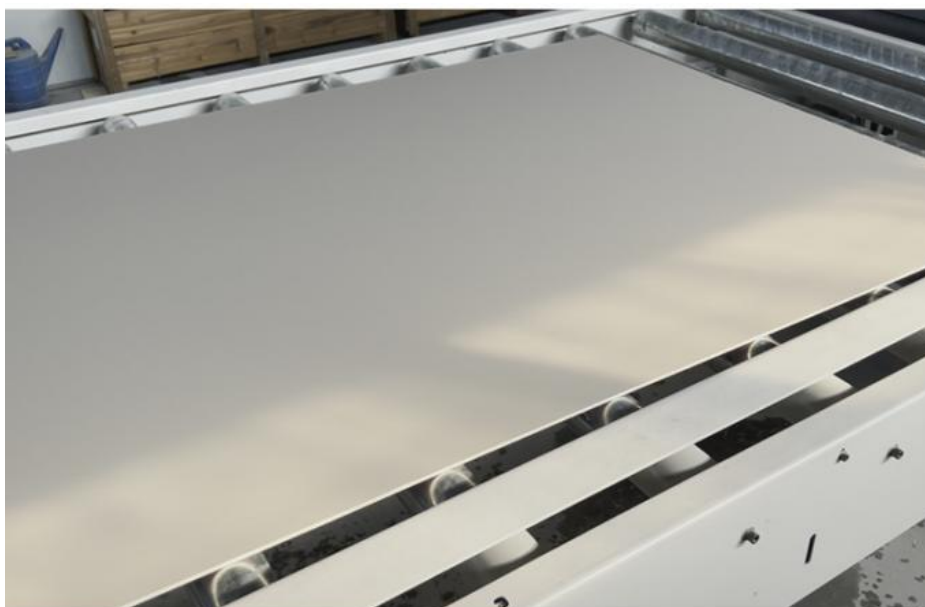


THICKNESS: 5MM



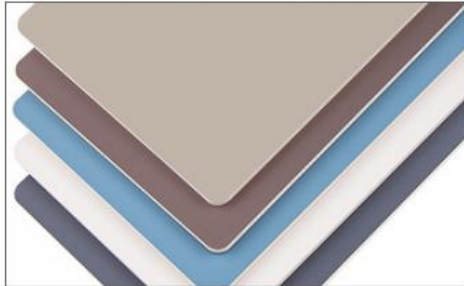
THICKNESS: 8MM

[PVC WALL](#) (please click here and know more details):



Product details

- ✓ No Fading.
- ✓ Fire Protection
- ✓ Easy To Install
- ✓ Mildew-proof
- ✓ Dirt Resistant
- ✓ Mothproof.



STABLE SHEET PROPERTIES

The product has insulation
No corrosion, no deformation

MOISTURE-PROOF

Damp proof toilet and
Basement are available



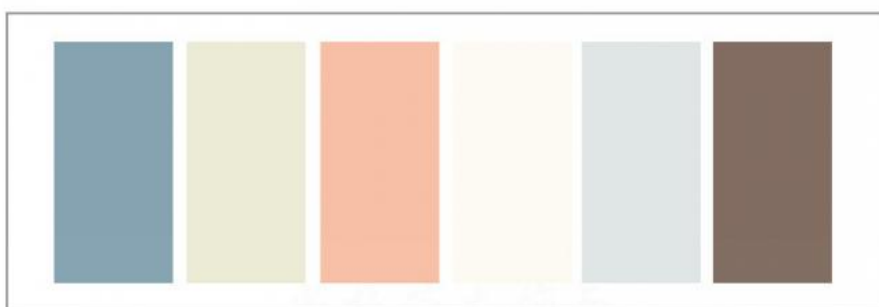
FIRE PREVENTION

Flame retardant, long service life

EASY INSTALLATION

Snap design, seamless splicing





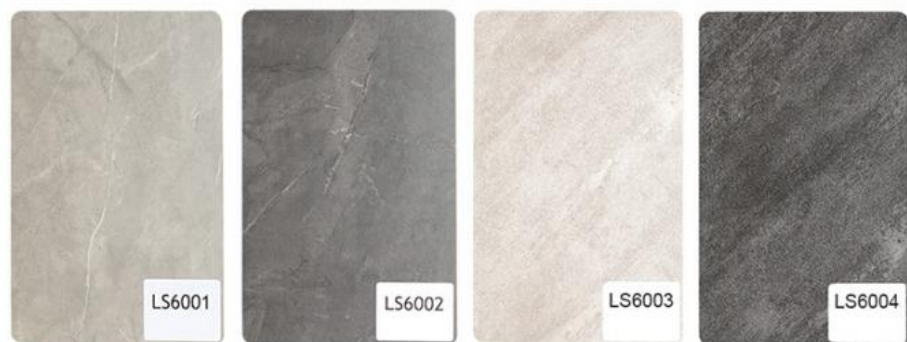
PHILIPPINES ALL WOOD GRAIN



Thin fabric



Stone xilie



The skin feeling xilie



Easy installation

Bending Angle

• • •



Line Matching

• • •



Multipie Scenarios

• • •



Market



School



Office



Aisle



A living room



Hotel

Decoration Case





Simple and light luxury

About us

WHY US

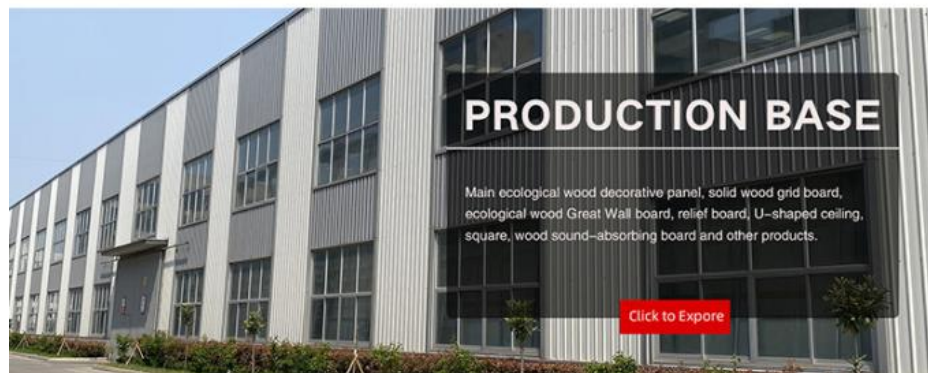
ENVIRONMENTAL PROTECTION TESTING AND CERTIFICATION





WHY US

Manufacturer's direct selling quality assurance





Shanghai Zhuokang Wood Industry Co., Ltd. is a professional production and processing of bamboo fiber wood veneer, carbon crystal board, bamboo fiber wallboard, bamboo fiber grille, outdoor wood plastic floor, wall skirt board, bamboo fiber lines, aluminum alloy metal lines and other products, the company has a complete and scientific quality management system. Shanghai Zhuokang Wood Industry Co., Ltd. integrity, strength and product quality has been recognized by the industry. Welcome friends from all walks of life to visit, guidance and business negotiations.

Q:How does your factory do regarding quality control?

A:"Quality is priority". Our factory has gained ISO9001 ,ISO45001, ISO 14001

Q:Can we make an OEM order?

A: We can offer or supply goods as customers' requirements.

Q: Do you offer free samples ?

A: Free sample is available, but delivery cost paid by customer.

Q: What is your delivery time ?

A: Generally, 1-2 weeks after confirmation of your deposit payment. Specific time depends on order items and order quantity.

Q: How about the delivery time ?

A: Lead time since receipt of 30% T/T deposit payment : 15-30 days. (Samples will be prepared within 5 days.)

Q: What kind of of payments does support ?

A: T/T, L/C, D/P, e-Credit Line

Q: Where are your main markets?

A: Dear friend, our markets covered Middle East, South America, South Asia, Southeast Asia, East Europe and Africa.



Shanghai Zhuokang Wood Industry Co., Ltd.



15202188098



ella@zhuokangsh.com



bamboocharcoalboard.com

Room 1501, Building 2, No. 2225 Huancheng West Road, Nanqiao, Fengxian District, Shanghai