

## Embossed WPC Fluted Wall Panel 15mm Acid And Alkali Resistance

Our Product Introduction

### Basic Information

- Place of Origin: China
- Brand Name: zhuokang
- Certification: ISO9001
- Model Number: customizable
- Minimum Order Quantity: Negotiate
- Price: Contact us
- Packaging Details: Pallet+Carton Packaging
- Delivery Time: 5-8 work days
- Payment Terms: L/C, D/A, D/P, T/T, Western Union, MoneyGram
- Supply Ability: 6000 meter per day

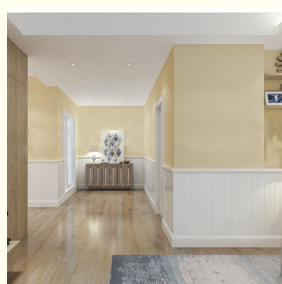


### Product Specification

- Material: Wood-plastic Composite Environmental Material
- Feature: Waterproof And Fireproof Moisture-proof
- Color: Customer Require
- Size: Customized Sizes Support
- Style: Modern Luxury
- Thickness: 15mm
- Product Name: WPC Wall Panel
- Certificate: ISO9001
- Highlight: **Embossed WPC Fluted Wall Panel, fluted wpc panel 15mm, fluted wpc panel acid and alkali resistance**



### More Images



for more products please visit us on [bamboocharcoalboard.com](http://bamboocharcoalboard.com)

## Product Description

### Waterproof And Fireproof WPC Embossed Wall Panel For Interior Decoration

Waterproof and fireproof WPC embossed wall panels, safety and delicacy are integrated. Immerse yourself in the beauty of the embossed texture made of Wood Plastic Composite (WPC) and enjoy the added benefit of waterproof and fireproof properties, creating a versatile and safe solution for interior decoration. WPC Embossed Wall Panels feature a beautifully embossed texture that adds depth and visual interest to walls. The intricate pattern creates a charming statement piece that enhances any space. Wall panels are designed for practicality and resist water and moisture. It is effectively waterproof to ensure longevity and resist damage from moisture. Crafted with safety in mind, WPC embossed wall panels are fire and heat resistant. The inherent properties of the material provide reliable protection against fire hazards and ensure the protection of interior spaces. The wall panels are made of high-quality wood-plastic composite material, which ensures excellent durability and abrasion resistance. It is designed to stand the test of time and is suitable for a variety of interior applications.

#### Specification

Item	Value
Material	Bamboo Charcoal Wall Wanel
Size	1220*2440/2600/2800/3000*5/8mm
Length	Customer's Demand
After-sale Service	Online technical support

#### Advantages

Easy Installation,Environmental Protection,Flexible,Bendable,High Density, foldable.Fireproof +waterproof+Moisture-proof+anti-scratch+Sound-Absorbing, Mould-Proof.Lightweight.Clear textures,Variety of colours,etc.

#### Applications

Hotel/Villa/Apartment/Office Building/Bathroom/Dining/Living Room/Shopping Mall,etc.



Set product design, manufacturing  
sales of industrial factories



Factory delivery



Easy installation

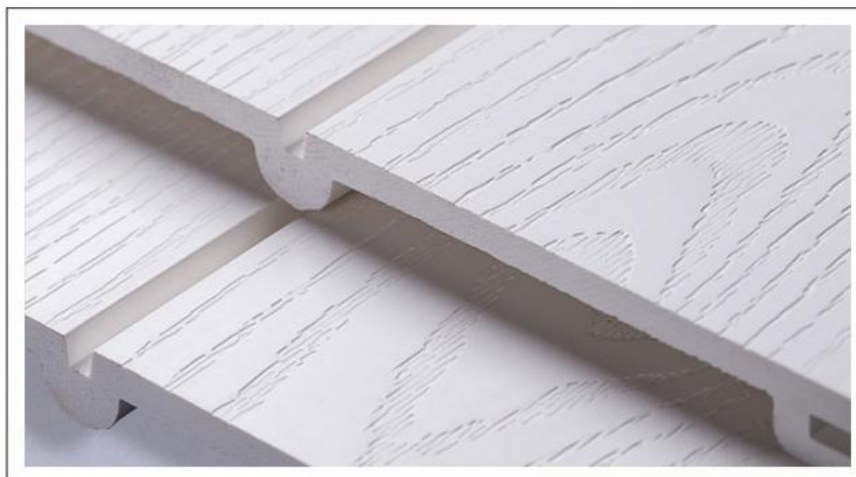


Free sample

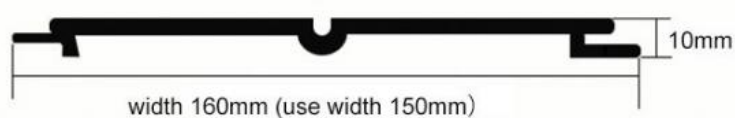


Inspection report

## Product information



Product section



## Product advantage

Products hard solid, log fiber, density in line with national standards

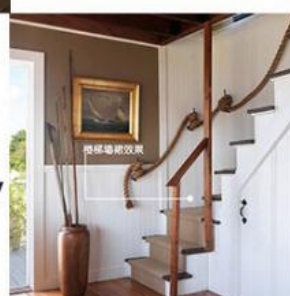


Add FSC polymer, high quality wood fiber structure, more corrosion resistant.



ZHUOKANG·product

Green & healthy



A variety of color stock, bright color, not easy to fade.



Environmental protection  
E0 grade, formaldehyde free, non-toxic, tasteless, waterproof.



### 3D solid surface

Adopting advanced embossing technology, the texture is realistic and natural, and the wood feeling is super strong

### Beautiful and delicate

Exquisite details, smooth section, uniform density, national standards, technology is not perfunctory.



### Easy installation

The product adopts concave and convex slot installation mode, convenient installation, saving time, effort and worry.

## Product color

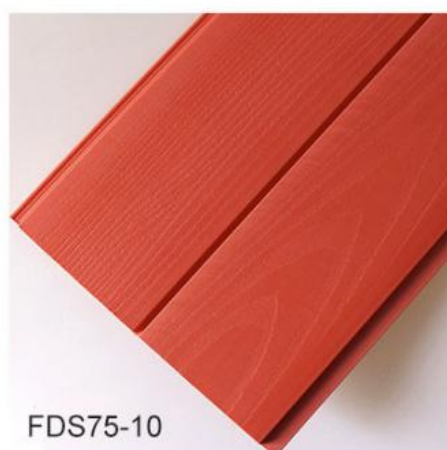


FDS75-01



FDS75-02





## Scene display

The installation effect is beautiful and generous



### Background wall

WE CAN ONLY ENCOUNTER EACH OTHER THANKS TO THE  
BACH OF THE WORLD







## Ceiling effect

WE CAN ONLY ENCOUNTER EACH OTHER RATHER THAN TRYING  
BACK TO BACK, THEN I NEED ME





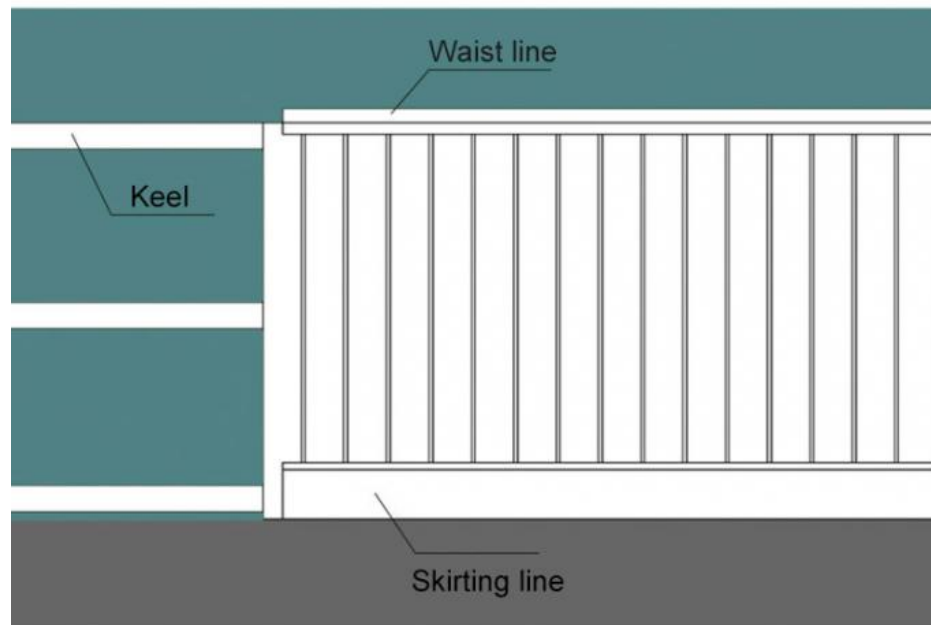
## Dado effect

WE CAN ONLY ENCOUNTER EACH OTHER BECAUSE THERE IS NO ONE ELSE  
BUT US IN THE WORLD. THAT'S WHY WE





## Installation instructions



1. First install the keel, the distance between the keel is 30-40cm, fixed with steel nails on the wall.
2. Bind the cut wainscoting with a carpenter's air nail gun. The carpenter's gun is placed at an Angle and fixed on the keel with diagonal nails at the female groove of the wainscoting

3.The waist line and skirting line are secured to the wainscoting with nail-free glue or with an air gun

## Inspection report



Through the national authority testing certification



Our products have passed the ISO9001 certification, the national authority testing organization inspection certification, all qualified, please rest assured to buy!

## About us

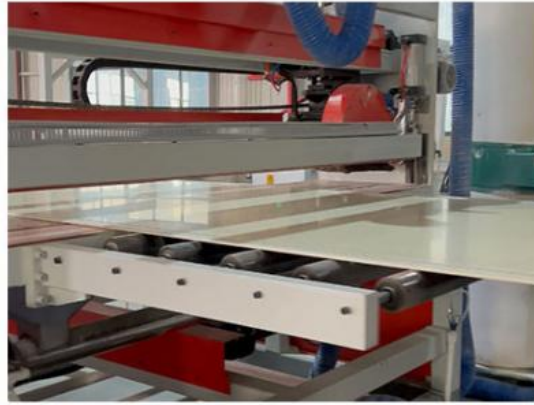
Strength factory, quality assurance, quality is reliable.

## PRODUCTION BASE

Main ecological wood decorative panel, solid wood grid board, ecological wood Great Wall board, relief board, U-shaped ceiling, square, wood sound-absorbing board and other products.

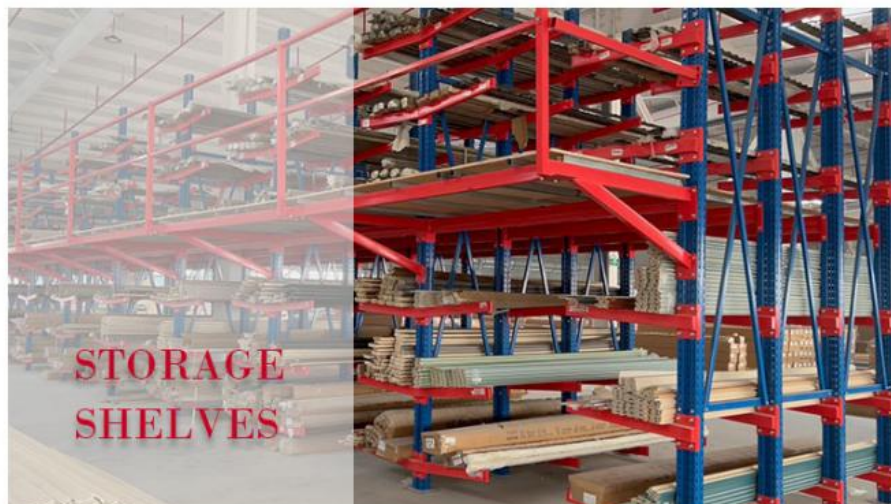


[Click to expore](#)



#### ■ 15,000-SQUARE-METER PLANT

15,000 square meters of production and storage workshop, sufficient supply of goods, multiple production lines at the same time, strong productivity, fast delivery.







## EXPORT CONTAINER

Strength manufacturers, quality assurance, exports to the world.  
Its high-quality products and perfect after-sales service have been widely recognized by customers.



Shanghai Zhuokang Wood Industry Co., Ltd. is a professional enterprise integrating research and development, production and sales. Through long-term research and experiments, we have successfully improved the parameters of the product, making our products more durable, waterproof, moisture-proof, flame retardant and environmental protection. Looking forward to the future, we will redouble our efforts to hone our internal skills, and return our customers and society with more mature technology, high-quality environmental protection products and excellent intimate service. If you need, please feel free to contact us!

Q: How does your factory do regarding quality control?

A: "Quality is priority". Our factory has gained ISO9001, ISO45001, ISO 14001

Q: Can we make an OEM order?

A: We can offer or supply goods as customers' requirements.

Q: Do you offer free samples?

A: Free sample is available, but delivery cost paid by customer.

Q: What is your delivery time?

A: Generally, 1-2 weeks after confirmation of your deposit payment. Specific time depends on order items and order quantity.

Q: How about the delivery time?

A: Lead time since receipt of 30% T/T deposit payment: 15-30 days. (Samples will be prepared within 5 days.)

Q: What kind of payments does support?

A: T/T, L/C, D/P, e-Credit Line

Q: Where are your main markets?

A: Dear friend, our markets covered Middle East, South America, South Asia, Southeast Asia, East Europe and Africa.





15202188098



ella@zhuokangsh.com



bamboocharcoalboard.com

Room 1501, Building 2, No. 2225 Huancheng West Road, Nanqiao, Fengxian District, Shanghai