

## OEM ODM Eco Friendly WPC Wood Panel Fluted Moisture Resistant

Our Product Introduction

for more products please visit us on [bamboocharcoalboard.com](http://bamboocharcoalboard.com)

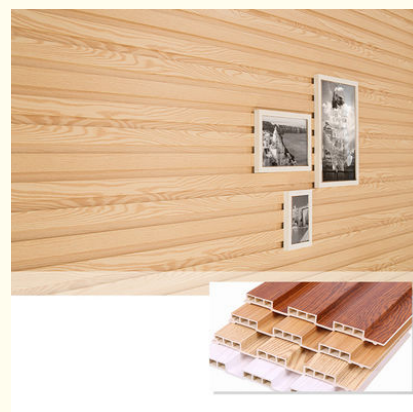
### Basic Information

- Place of Origin: China
- Brand Name: ZhuoKang
- Certification: ISO9001
- Model Number: Customized
- Minimum Order Quantity: Negotiate
- Price: Negotiate
- Packaging Details: Pallet +Carton Packaging
- Delivery Time: 5-8 work days
- Payment Terms: L/C, T/T
- Supply Ability: 6000 meter per day



### Product Specification

- Material: Wood Plastic Composite
- Application: Office, Indoor, Interior Walls & Ceilings
- Size: Customized
- Product Name: WPC Fluted Wall Panel
- Feature: Waterproof, Fireproof, Environmental
- Function: Waterproof, Moisture-Proof, Fireproof
- Package: Pallet+carton Packaging
- Color: Customized
- Highlight: **WPC Wood Panel Moisture Resistant, OEM ODM wpc fluted, wpc fluted Moisture Resistant**



### More Images



## Product Description

### Eco-Friendly Fireproof And Moisture-Proof Wood-Plastic Great Wall Panel Wood Panels

Environmental Fire and Moisture Resistant WPC Great Wall Panels feature an exquisite WPC Great Wall design that adds charm and character to the walls. Intricate patterns create visual masterpieces that enhance the overall beauty of a space. The wall panels are made of environmentally friendly wood-plastic composite material, a sustainable choice for interior design. By choosing this panel, you can contribute to reducing your environmental impact while enjoying its unique advantages. Wood-plastic Great Wall panels are specially designed for safety, fire resistance and heat resistance. The inherent properties of the material provide reliable protection against fire hazards and ensure the protection of interior spaces. Wall panels are designed to resist moisture and humidity and are moisture and mildew resistant. It effectively waterproofs and prevents mold growth, ensuring the longevity of the walls. The wall panels are designed for easy installation, saving time and effort. Its low-maintenance surface ensures hassle-free cleaning and stress-free enjoyment of your space. Wall panels transform a living or work space into a sustainable retreat. The combination of eco-friendly materials and fire-resistant features creates an atmosphere of peace and well-being.

#### Specification

Item	Value
Material	Bamboo Charcoal Wall Wanel
Size	1220*2440/2600/2800/3000*5/8mm
Length	Customer's Demand
After-sale Service	Online technical support

#### Advantages

Easy Installation, Environmental Protection, Flexible, Bendable, High Density, foldable. Fireproof + waterproof + Moisture-proof + anti-scratch + Sound-Absorbing, Mould-Proof. Lightweight. Clear textures, Variety of colours, etc.

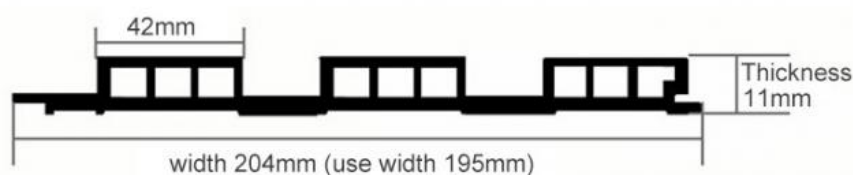
#### Applications

Hotel/Villa/Apartment/Office Building/Bathroom/Dining/Living Room/Shopping Mall, etc.

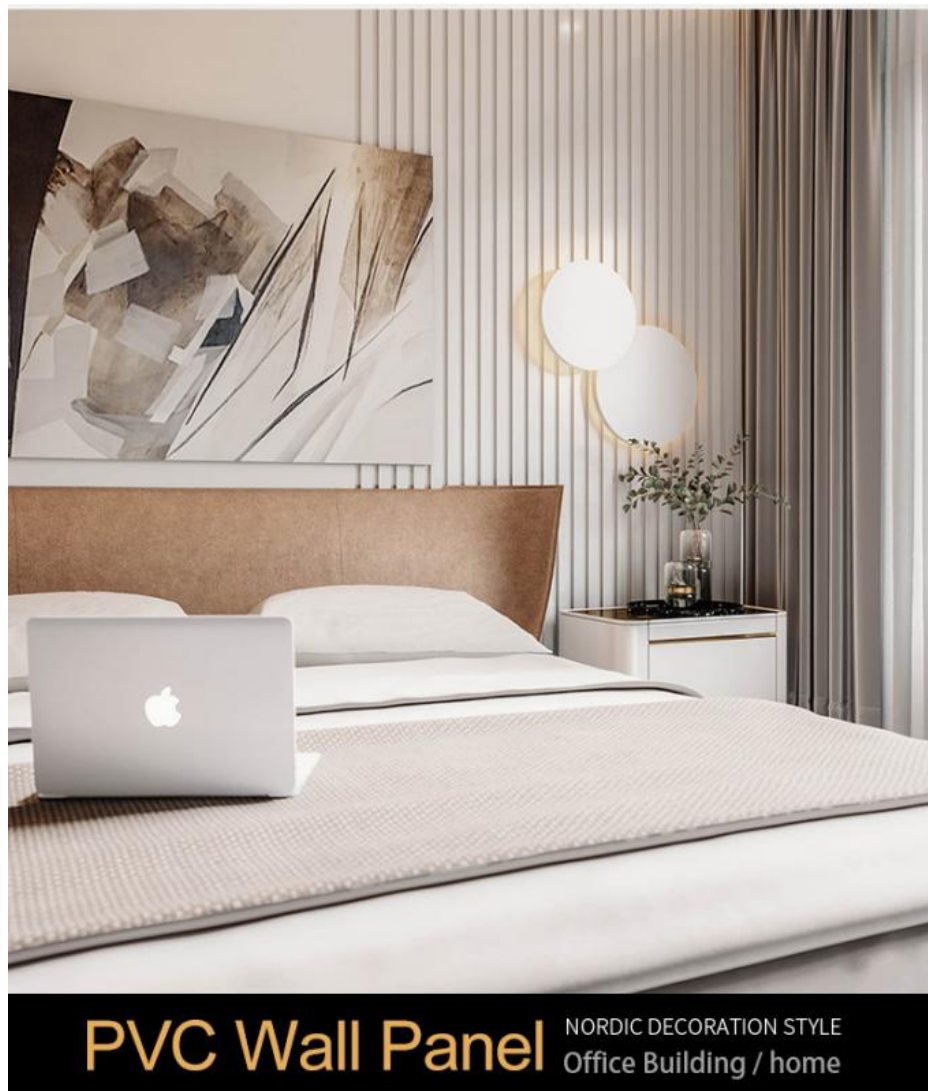


#### SECTION

Size: 204\*3000\*11mm



Standing stock 3 meters long, length can be customized



**PVC Wall Panel** NORDIC DECORATION STYLE  
Office Building / home

## Luxury Series style

Home decoration, tooling for a variety of occasions



#Everything you want is right here#

## Color choices

Many colors, many choices



LMS-01



LMS-02



LMS-03



LMS-04



LMS-05



LMS-06



LMS-07



LMS-08



LMS-09



LMS-10



LMS-11



LMS-12





LMS-22



LMS-23



LMS-24



LMS-25



LMS-26



LMS-27



LMS-28



LMS-29



LMS-30



LMS-31



LMS-32



LMS-33



LMS-37



LMS-38



LMS-39



LMS-43



LMS-44



LMS-45



LMS-46



LMS-47



LMS-48



LMS-52



LMS-53



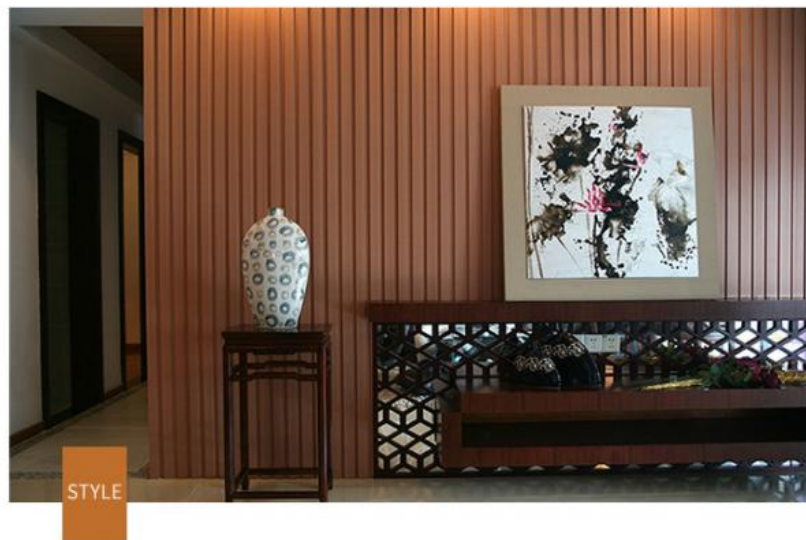
LMS-54

▲ Please consult customer service for more colors

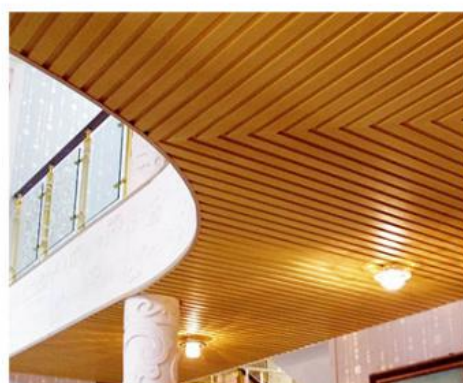
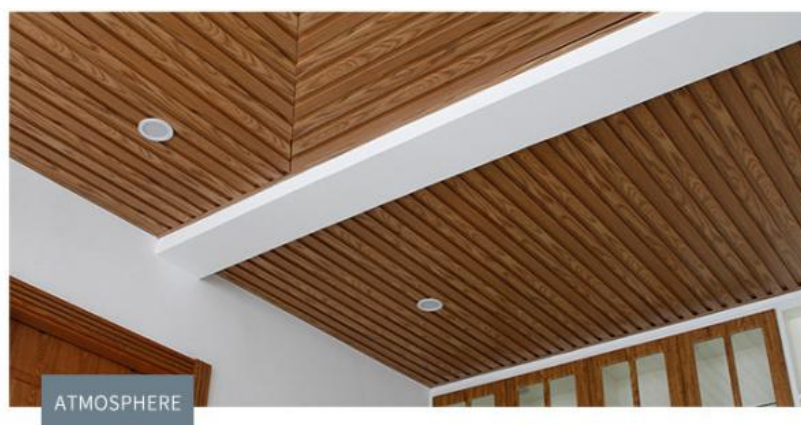
---

## Scene effect

Beautiful effect, simple atmosphere



SEIKO



SIMPLE







CLEAN



A R I C H N O R D I C H U T

Product  
photos

Physical photography, what you see is what you get



Waterproof

Fireproof

E-Installation





### Natural texture

The colors are bright and the textures are clear and natural.



### More durable

Visible thickening design, Strong and wear-resistant, long life



### Base material

Base material dense uniform, good toughness, plasticity, moderate weight.



# inspection & certificate

Through the national authority testing certification

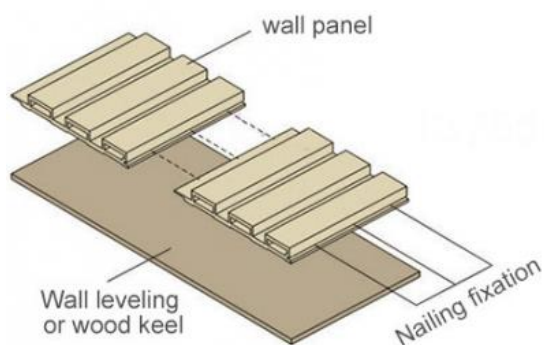


Our products have passed the ISO9001 certification, the national authority testing organization inspection certification, all qualified, please rest assured to buy!

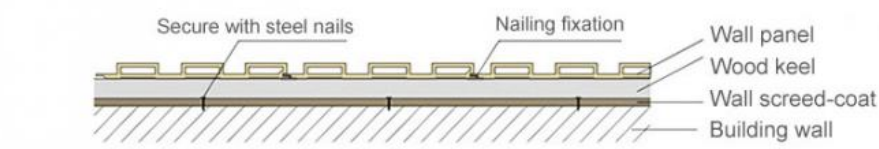
## Installation steps

Easy to install and widely used

### • Nailing installation



### • Plane diagram





01 Clean the wall before installation



02 Secure the wooden keel with steel nails



03 Tilt the air gun nail into the socket



04 Installation Effect Display

## Company profile

Strength of manufacturers, authentic guarantee.

### PRODUCTION BASE

Main ecological wood decorative panel, solid wood grid board, ecological wood Great Wall board, relief board, U-shaped ceiling, square, wood sound-absorbing board and other products.







#### 15,000-SQUARE-METER PLANT

15,000 square meters of production and storage workshop, sufficient supply of goods, multiple production lines at the same time, strong productivity, fast delivery.





## EXPORT CONTAINER

Strength manufacturers, quality assurance, exports to the world.  
Its high-quality products and perfect after-sales service have been widely recognized by customers.



Shanghai Zhukang Wood Industry Co., Ltd. has 26 international advanced level production lines and dozens of skilled production and research personnel. The company's main products are: (bamboo charcoal/bamboo) wood veneer panels, ecological wood grille panels, Great Wall panels, relief panels, U-shaped ceiling, square, wood sound-absorbing panels, solid wood grille and supporting production line production and sales. If you need, please feel free to contact us!

Q:How does your factory do regarding quality control?

A:"Quality is priority". Our factory has gained ISO9001 ,ISO45001, ISO 14001

Q:Can we make an OEM order?

A: We can offer or supply goods as customers' requirements.

Q: Do you offer free samples ?

A: Free sample is available, but delivery cost paid by customer.

Q: What is your delivery time ?

A: Generally, 1-2 weeks after confirmation of your deposit payment. Specific time depends on order items and order quantity.

Q: How about the delivery time ?

A: Lead time since receipt of 30% T/T deposit payment : 15-30 days. (Samples will be prepared within 5 days.)

Q: What kind of of payments does support ?

A: T/T, L/C, D/P, e-Credit Line

Q: Where are your main markets?

A: Dear friend, our markets coverd Middle East, South America, South Asia, Southeast Asia, East Europe and Africa.



**Shanghai Zhuokang Wood Industry Co., Ltd.**



15202188098



ella@zhuokangsh.com



bamboocharcoalboard.com

Room 1501, Building 2, No. 2225 Huancheng West Road, Nanqiao, Fengxian District, Shanghai