

## 15mm Interior Decoration Wall Panel PVC Wood Plastic Arc Board

Our Product Introduction

for more products please visit us on [bamboocharcoalboard.com](http://bamboocharcoalboard.com)

### Basic Information

- Place of Origin: China
- Brand Name: zhuokang
- Certification: ISO9001
- Model Number: customizable
- Minimum Order Quantity: Negotiate
- Price: Contact us
- Packaging Details: Pallet+Carton Packaging
- Delivery Time: 5-8 work days
- Payment Terms: L/C, D/A, D/P, T/T, Western Union, MoneyGram
- Supply Ability: 6000 meter per day



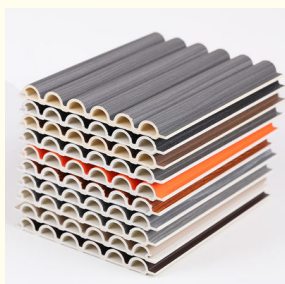
### Product Specification

- Material: Wood-plastic Composite Environmental Material
- Feature: Waterproof And Fireproof Moisture-proof
- Color: Customer Require
- Size: Customized Sizes Support
- Style: Modern Luxury
- Thickness: 15mm
- Product Name: WPC Wall Panel
- Certificate: ISO9001
- Highlight: 15mm Interior Decoration Wall Panel, Interior Decoration PVC Wood Plastic Arc Board , 15mm PVC Wood Plastic Arc Board



PVC WALL PANEL

### More Images



## Product Description

### Modern Light Luxury Interior Decoration PVC Wood Plastic Arc Board Wall Panel

PVC wood plastic curved board wall panels have a delicate curved board texture, which can add depth and character to the wall. Fluid lines create captivating visual elements that enhance the overall aesthetic of the interior. Wall panels are made of high quality PVC wood plastic composite material for durability. The combination of PVC and wood ensures excellent durability, making it resistant to abrasion, fading and moisture. Exuding sophistication, the curved plank wall panel harmoniously blends opulence and simplicity. Whether used as an accent wall, decorative focal point or artful fixture, their versatility allows you to create personalized spaces that resonate with modern luxury. The wall panels are designed for easy installation, saving time and effort. Its low-maintenance surface ensures hassle-free cleaning so you can enjoy your space stress-free. Spaces have been redesigned in a refined manner to create ambiances that reflect contemporary taste and an appreciation for refined living.

#### Specification

Item	Value
Material	Bamboo Charcoal Wall Wanel
Size	1220*2440/2600/2800/3000*5/8mm
Length	Customer's Demand
After-sale Service	Online technical support

#### Advantages

Easy Installation,Environmental Protection,Flexible,Bendable,High Density, foldable.Fireproof +waterproof+Moisture-proof+anti-scratch+Sound-Absorbing, Mould-Proof.Lightweight.Clear textures,Variety of colours,etc.

#### Applications

Hotel/Villa/Apartment/Office Building/Bathroom/Dining/Living Room/Shopping Mall,etc.



## CAREFULLY SELECTED MATERIALS INGENUITY QUALITY



Hard material



Green health



Easy to install



Stain resistance

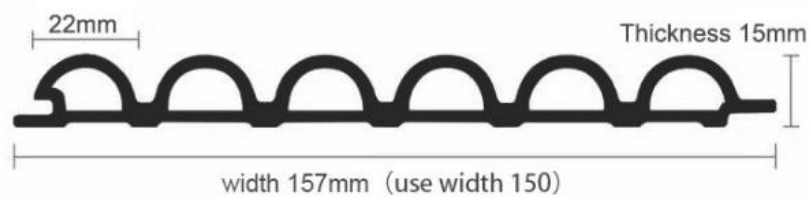


waterproof



Retardant

## Product information



Conventional length 3 meters, can be customized 2-6 meters arbitrary length



# Color display



		
LMS-01	LMS-02	LMS-03
		
LMS-04	LMS-05	LMS-06
		
LMS-07	LMS-08	LMS-09
		
LMS-10	LMS-11	LMS-12
		
LMS-22	LMS-23	LMS-24
		
LMS-43	LMS-44	LMS-45
		
LMS-52	LMS-53	LMS-54

▲ Please consult customer service for more colors

## Product details

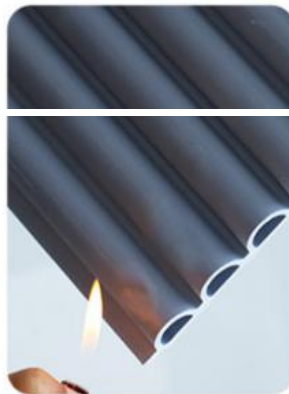


### ◆ HIGH QUALITY RAW MATERIAL

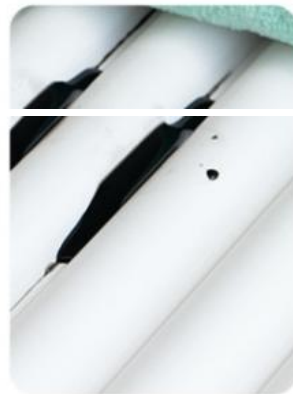
Carefully selected high-quality raw materials, quality clear to see, trustworthy.



### ◆ WATERPROOF



### ◆ RETARDANT



### ◆ STAIN RESISTANCE

The product has good waterproof, moistureproof, flame retardant, anti-fouling and easy to clean, a wet rag can be clean as new.





## ◆ EASY TO INSTALL

Easy to install, seamless splicing, save time and effort more worry.



## Inspection certificate

The product through the national authority testing certification



Test report for your family



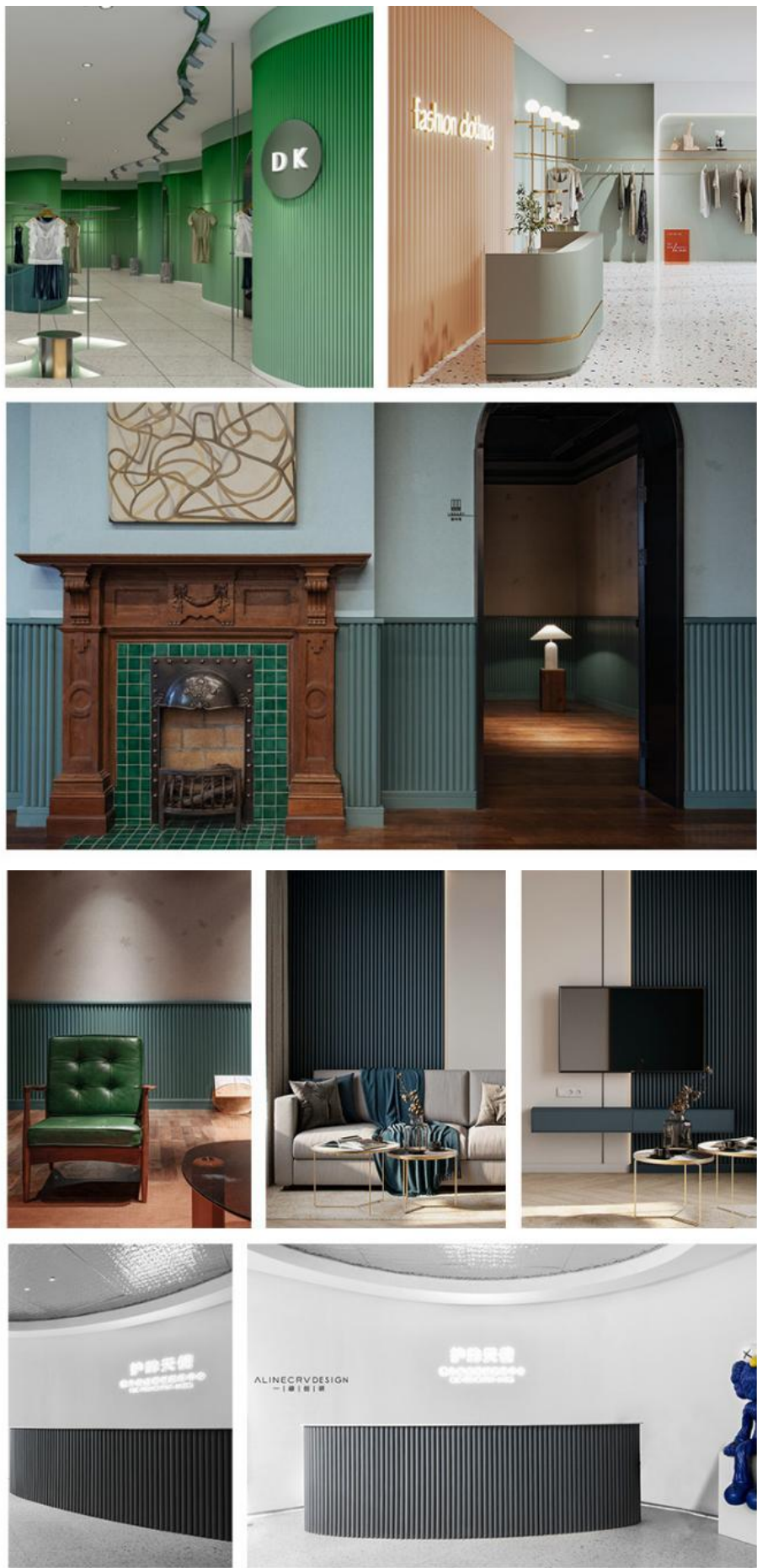
# Installation effect

Suitable for multiple scenes, beautiful installation effect



Can be used for home decoration clapboard, background wall, ceiling, dado decoration; It can also be used for office, hotel, supermarket, shop and other engineering decoration.





## Company Profile





Strength factory, quality assurance, quality is reliable.

## PRODUCTION BASE

Main ecological wood decorative panel, solid wood grid board, ecological wood Great Wall board, relief board, U-shaped ceiling, square, wood sound-absorbing board and other products.



[Click to explore](#)



### 15,000-SQUARE-METER PLANT

15,000 square meters of production and storage workshop, sufficient supply of goods, multiple production lines at the same time, strong productivity, fast delivery.



## EXPORT CONTAINER

Strength manufacturers, quality assurance, exports to the world.  
Its high-quality products and perfect after-sales service have been widely recognized by customers.



Shanghai Zhuokang Wood Industry Co., Ltd. is a professional enterprise integrating research and development, production and sales. Through long-term research and experiments, we have successfully improved the parameters of the product, making our products more durable, waterproof, moisture-proof, flame retardant and environmental protection. Looking forward to the future, we will redouble our efforts to hone our internal skills, and return our customers and society with more mature technology, high-quality environmental protection products and excellent intimate service. If you need, please feel free to contact us!

Q: How does your factory do regarding quality control?

A: "Quality is priority". Our factory has gained ISO9001, ISO45001, ISO 14001

Q:Can we make an OEM order?

A: We can offer or supply goods as customers' requirements.

Q: Do you offer free samples ?

A: Free sample is available, but delivery cost paid by customer.

Q: What is your delivery time ?

A: Generally, 1-2 weeks after confirmation of your deposit payment. Specific time depends on order items and order quantity.

Q: How about the delivery time ?

A: Lead time since receipt of 30% T/T deposit payment : 15-30 days. (Samples will be prepared within 5 days.)

Q: What kind of of payments does support ?

A: T/T, L/C, D/P, e-Credit Line

Q: Where are your main markets?

A: Dear friend, our markets covered Middle East, South America, South Asia, Southeast Asia, East Europe and Africa.



**Shanghai Zhuokang Wood Industry Co., Ltd.**



15202188098



ella@zhuokangsh.com



bamboocharcoalboard.com

Room 1501, Building 2, No. 2225 Huancheng West Road, Nanqiao, Fengxian District, Shanghai