

Hot Sale Embossed Waterproof And Insect-Proof WPC Interior Wall Panels

Our Product Introduction

Basic Information

- Place of Origin: China
- Brand Name: ZhuoKang
- Certification: ISO9001
- Model Number: Customized
- Minimum Order Quantity: Negotiate
- Price: Negotiate
- Packaging Details: Pallet + Carton Packaging
- Delivery Time: 5-8 work days
- Payment Terms: L/C, T/T
- Supply Ability: 6000 meter per day



Product Specification

- Material: Wood Plastic Composite
- Application: Office, Indoor, Interior Walls & Ceilings
- Size: Customized
- Product Name: WPC Decorative Wall Panel
- Feature: Waterproof, Fireproof, Environmental
- Function: Waterproof, Moisture-Proof, Fireproof
- Type: Composite Wall Panels
- Package: Pallet + carton Packaging
- Highlight: Embossed wpc interior wall cladding, wpc interior wall cladding Insect Proof, Embossed wpc wall panel interior



More Images



for more products please visit us on bamboocharcoalboard.com

Product Description

Hot Sale Embossed Waterproof And Insect-Proof WPC Interior Wall Panels

Embossed waterproof and insect-resistant WPC siding enhances living spaces with style, durability and practicality. While benefiting from water and insect repellent properties, creating attractive and long-lasting interiors. Wall panels feature a beautifully embossed texture that adds depth and visual interest to walls. The embossed pattern creates an attractive and unique design element that enhances interior decor. Wall panels are made of high-quality wood plastic composite (WPC), which is inherently water and moisture resistant. They are effectively waterproof to ensure longevity and resist damage from moisture. WPC siding provides reliable protection against insects and termites. The inherent properties of the material form an effective barrier, protecting the walls from potential damage caused by pests. Wall panels are engineered to stand the test of time and last a lifetime. They maintain structural integrity and visual appeal, making them a long-term investment in interior spaces.

Specification

Item	Value
Material	WPC Wall Panel
Size	1220*2440/2600/2800/3000*5/8mm
Length	Customer's Demand
After-sale Service	Online technical support

Advantages

Easy Installation,Environmental Protection,Flexible,Bendable,High Density, foldable.Fireproof +waterproof+Moisture-proof+anti-scratch+Sound-Absorbing, Mould-Proof.Lightweight.Clear textures,Variety of colours,etc.

Applications

Hotel/Villa/Apartment/Office Building/Bathroom/Dining/Living Room/Shopping Mall,etc.





Product Parameters

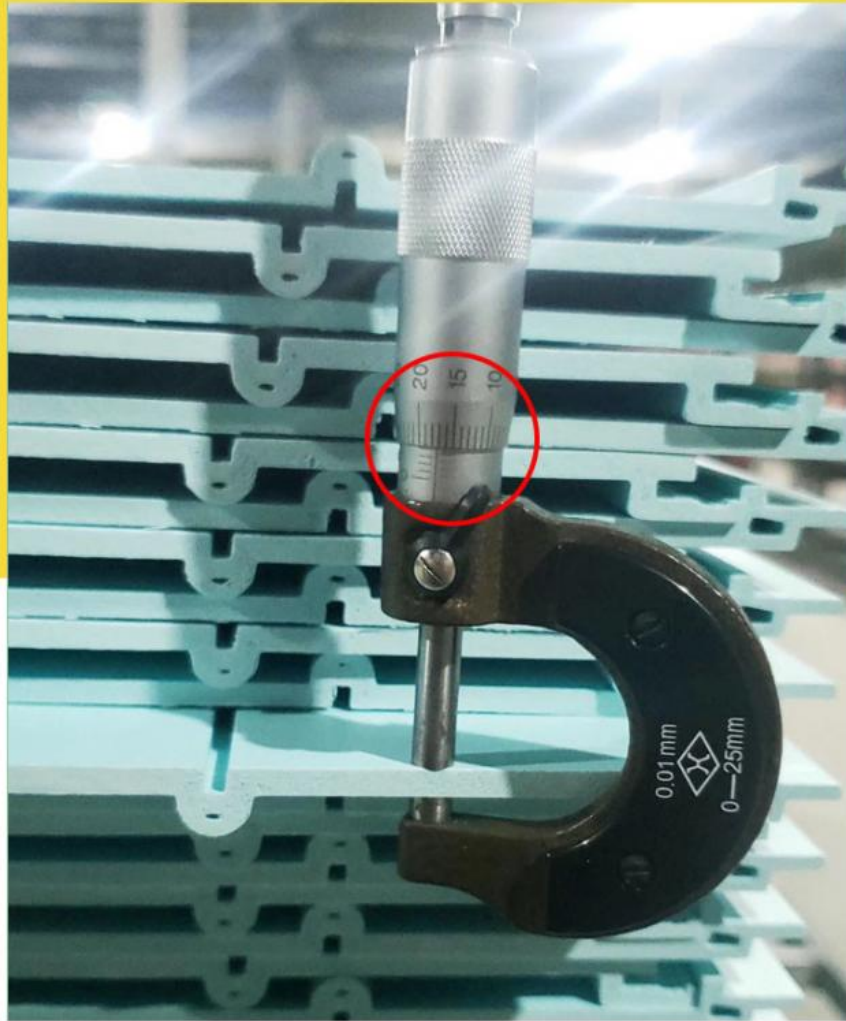


Inventory of finished products 3 meters long, can be customized 2-6 meters arbitrary length

Product display









Splicing installation

Simple and fast, save time, effort and worry.



The relief texture is clear and natural

Good quality Rest assured purchase

Stable and durable, can be used in different environments



Waterproof

Available in humid environment

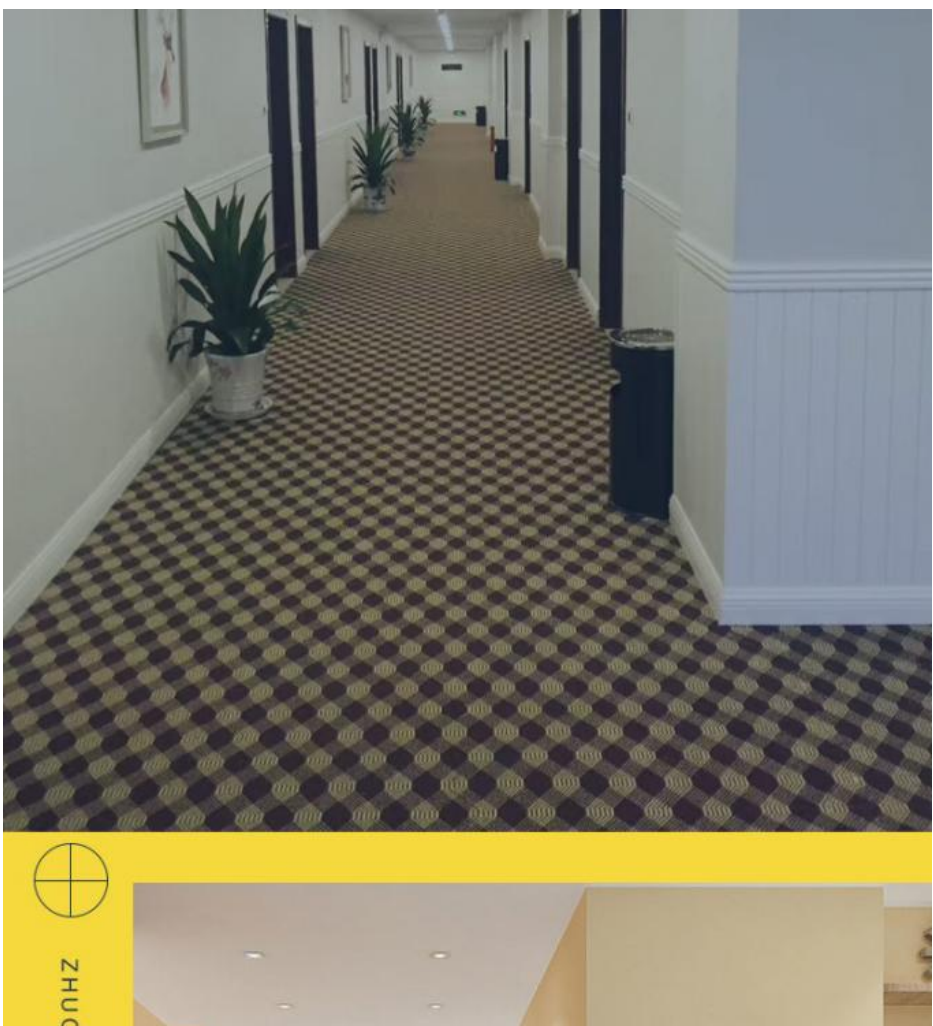


Fireproof

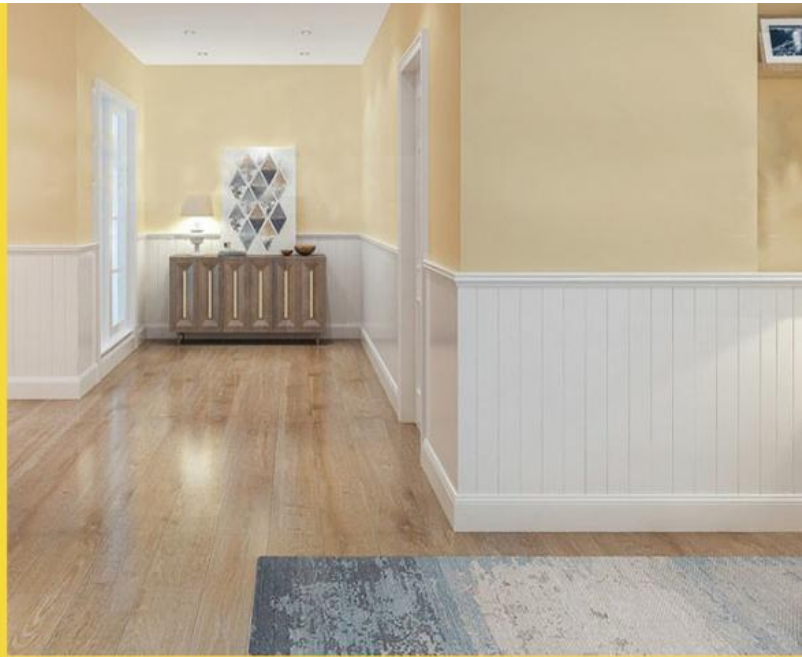
Go out from the fire, safe and secure.



Hotels, guesthouses, shopping malls, kindergartens and other public decoration, family interior decoration and ceiling, dado and other decoration.



0/KANG/MU/YE



Exquisite dado, collision
protection wall.



Healthy and environmentally friendly, decorate today and move in tomorrow

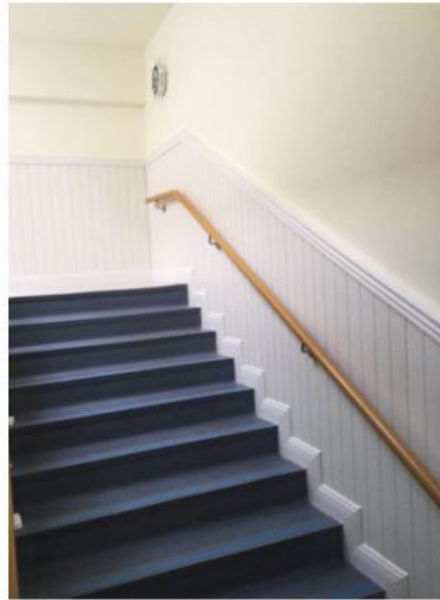
Ceiling effect



Attic effect



Stairway



Dado

Product color





FDS75-05



FDS75-06



FDS75-07



FDS75-08



FDS75-09



FDS75-10

Accessory selection

All types of horn line complete, with the wall board
with the same material and color



70*30 Waist line



100 Skirting line



25*25 Outer Angle line

Inside the line



About us

Strength factory, quality assurance, quality is reliable.

PRODUCTION BASE

Main ecological wood decorative panel, solid wood grid board, ecological wood Great Wall board, relief board, U-shaped ceiling, square, wood sound-absorbing board and other products.



[Click to explore](#)



15,000-SQUARE-METER PLANT

15,000 square meters of production and storage workshop, sufficient supply of goods, multiple production lines at the same time, strong productivity, fast delivery.



Shanghai Zhuokang Wood Industry Co., Ltd. is a professional production and processing of bamboo fiber wood veneer, carbon crystal board, bamboo fiber wallboard, bamboo fiber grille, outdoor wood plastic floor, wall skirt board, bamboo fiber lines, aluminum alloy metal lines and other products, the company has a complete and scientific quality management system. Shanghai Zhuokang Wood Industry Co., Ltd. integrity, strength and product quality has been recognized by the industry. Welcome friends from all walks of life to visit, guidance and business negotiations.

Q:How does your factory do regarding quality control?

A:"Quality is priority". Our factory has gained ISO9001 ,ISO45001 , ISO 14001

Q:Can we make an OEM order?

A: We can offer or supply goods as customers' requirements.

Q: Do you offer free samples ?

A: Free sample is available, but delivery cost paid by customer.

Q: What is your delivery time ?

A: Generally, 1-2 weeks after confirmation of your deposit payment. Specific time depends on order items and order quantity.

Q: How about the delivery time ?

A: Lead time since receipt of 30% T/T deposit payment : 15-30 days. (Samples will be prepared within 5 days.)

Q: What kind of of payments does support ?

A: T/T, L/C, D/P, e-Credit Line

Q: Where are your main markets?

A: Dear friend, our markets covered Middle East, South America, South Asia, Southeast Asia, East Europe and Africa.



Shanghai Zhuokang Wood Industry Co., Ltd.



15202188098



ella@zhuokangsh.com



bamboocharcoalboard.com

Room 1501, Building 2, No. 2225 Huancheng West Road, Nanqiao, Fengxian District, Shanghai